



1204/41-45 Waitara Avenue Waitara, NSW

1 1 1

Premium One-bedroom Apartment in a Sought After Location

This private and peaceful one bedroom apartment is situated on level 2 of a well-maintained complex known as "Waldorf Waitara". It boasts light-filled interior, oversized entertainer's balcony with great green outlooks over the Mark Taylor Oval, tennis courts and children's playground.

Price: \$560 Per week
Bond: \$2,240
Available Date: 19/01/2024

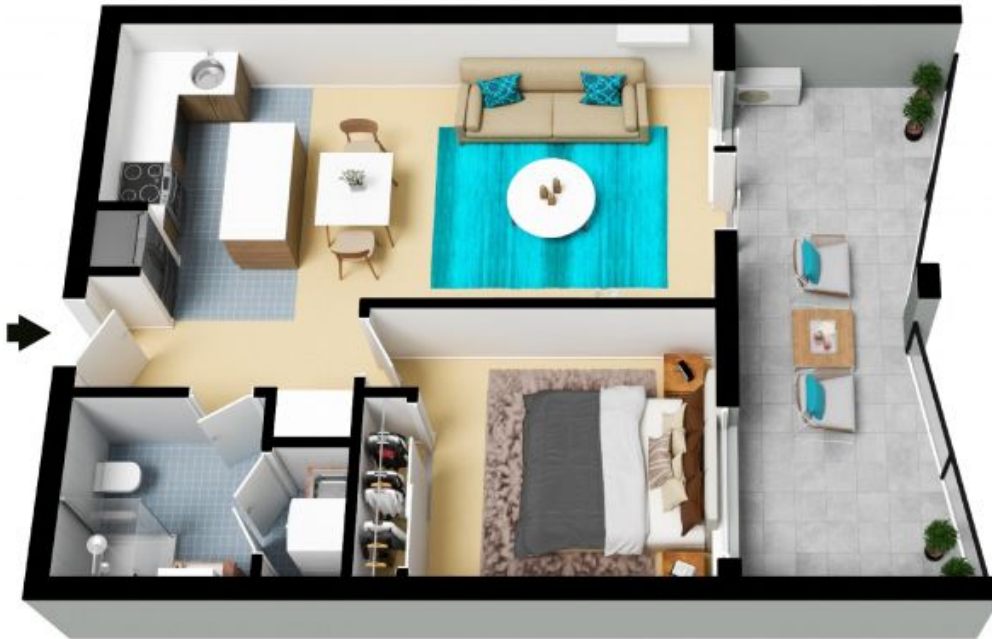


Brad Sargent

0413 773 423

1204/41-45 Waitara Avenue
Waitara

STONE



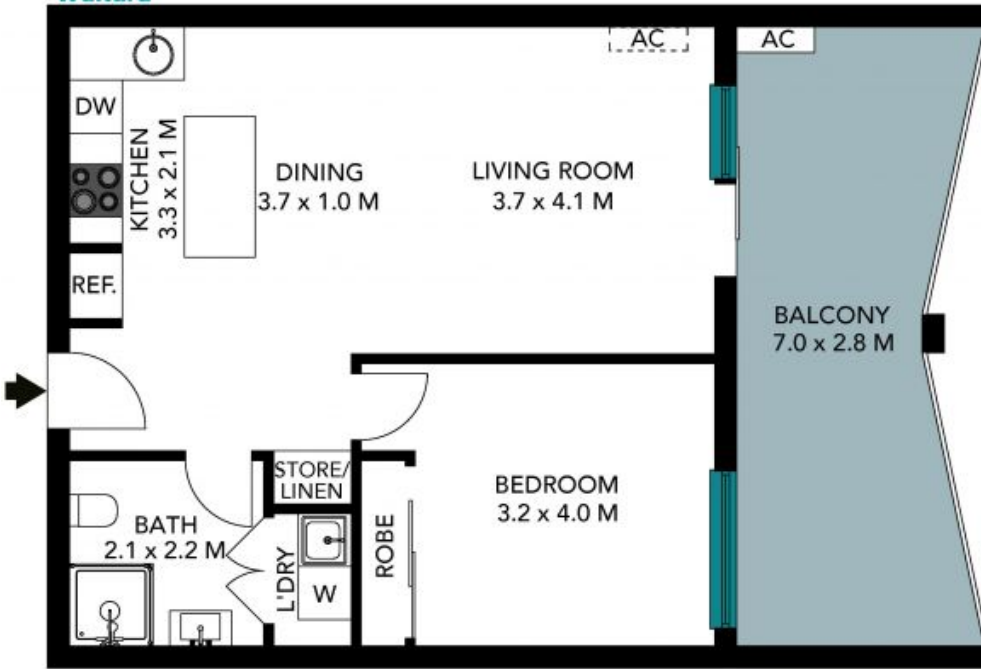
Internal Living: 51 sqm
External Living: 17 sqm
Total Living Area: 68 sqm



The floor plan is not to scale; measurements are indicative and in metres. All features included in this 3D plan are for inspiration purposes only. This is not an exact replica of the property or the position of exterior elements. Plans should not be relied on. Interested parties should make and rely on their own enquiries.

1204/41-45 Waitara Avenue
Waitara

STONE



Internal Living: 51 sqm
External Living: 17 sqm
Total Living Area: 68 sqm



(NOT IN POSITION)



The floor plan is not to scale, measurements are indicative and in metres. Exterior elements are not in position. Plans should not be relied on, interested parties should make and rely on their own enquiries. All other information provided has been collected from reliable sources but cannot be guaranteed for accuracy.