

511/7 Rockdale Plaza Drive Rockdale, NSW

2 2 1

### 149sqm Ground Floor spacious resort living

Inspect to fully appreciate why units in the Rockdale Plaza Apartments complex are among the area's most sought-after.

With a southerly orientation, impeccably maintained contemporary finishes and open-plan living flowing to a large courtyard, this apartment is the pick of the bunch.

Sitting atop shops, dining and bus connections, the home provides access to an array of resort-style facilities, from rooftop tennis courts, gardens and barbecue areas, to an indoor pool, spa and gym.

You'll also enjoy living a short stroll from trains, within 15km of the CBD, and minutes from Lady Robinson's beach and waterside dining.

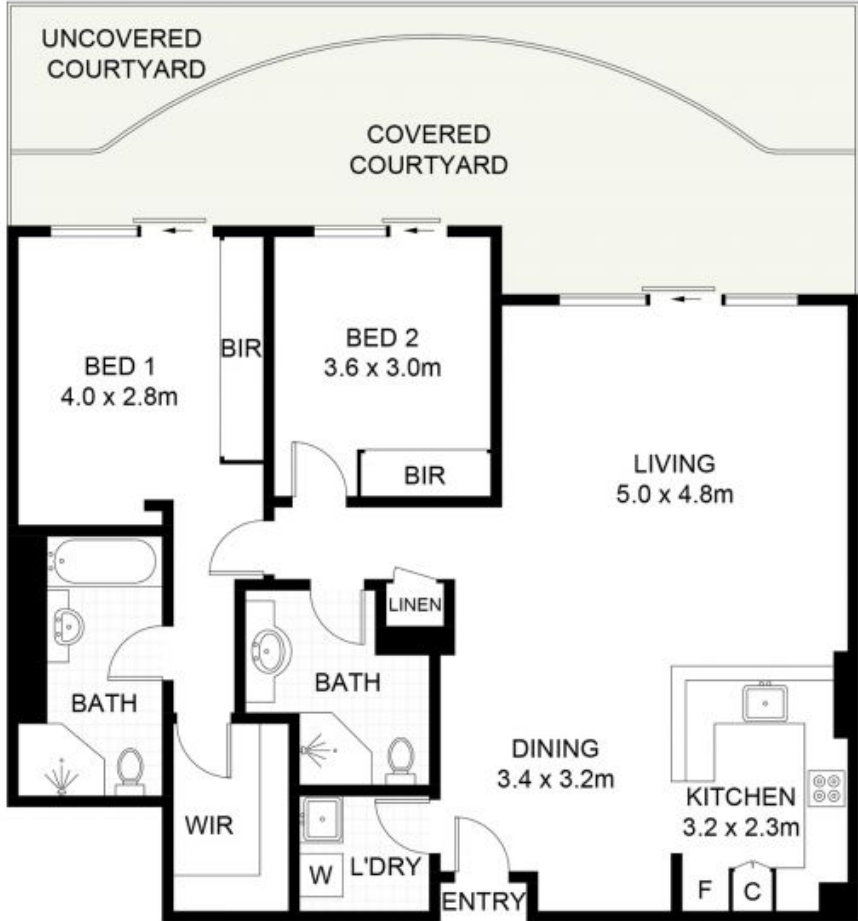
- Two bedrooms including ensuite and built-ins.
- Impeccably maintained complex with access to full suite of resort facilities.

Price: SOLD | \$820,000



**George Kambouroglou**

0422 421 111



(NOT SHOWN IN ACTUAL LOCATION / ORIENTATION)



## 511/7 Rockdale Plaza Drive, Rockdale

Scale in metres. Indicative only. Dimensions are approximate. All information contained herein is gathered from sources we believe to be reliable. However, we cannot guarantee its accuracy and interested persons should rely on their own enquiries. Some images may contain digital furniture.