



3 Messmate Street Aspley, QLD



Family Friendly

The ideal starter or down sizer just moments to parkland, cafes, transport and more, this immaculately presented 1980's lowset brick abode nestled on a flat 611 sqm block boasts an abundance of natural light with some of the best outdoor living spaces you will find.

- Flat 611sqm block
- Mitsubishi ducted air-conditioning
- Large DUX Pro Flow hot water system
- NBN connected
- Brick construction
- Northsouth facing aspect
- Secure garage and tandem carport
- Front gate creating a secure compound

Price:

For Sale Now



Tristan Rowland

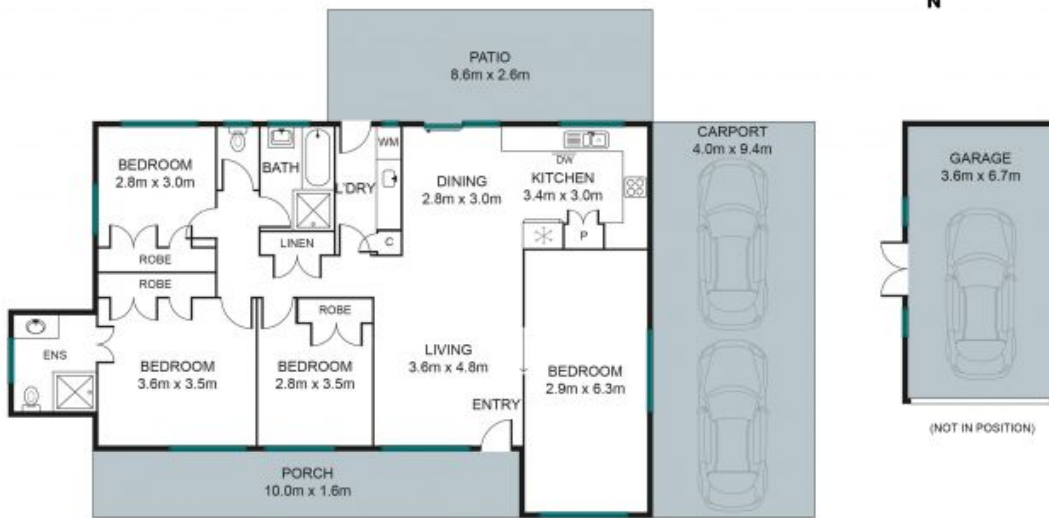
0411 572 970



Kate Veal

0455 333 306

INTERNAL 112 SQM
EXTERNAL 100 SQM
TOTAL 212 SQM



The site plan and floor plan are not to scale, measurements are indicative and in metres. Bushes and trees are placed for illustration purposes. Plans should not be relied on, interested parties should make and rely on their own enquiries.

3 Messmate Street, Aspley

Stoneaspley.com.au

