



19/52 Christie Street St Leonards, NSW 3 2 2

Resort Style Living in Leafy, Parkside Locale

A prestigious offering in Mirvac's sought after Northmark development, this generously proportioned three-bedroom apartment is elevated on the first floor with lift access and secure gated entry from the street. Immaculately presented with a spacious layout, it offers secure double parking and a central location. It's a short stroll to St Leonards Station, gyms, cafes, Gore Hill Oval, Wadangari playground, Crows Nest dining and the new Metro due to open in 2024.

- Designated living and dining areas, both flow to the wraparound balcony
- Designer gourmet kitchen with extra deep Caesar stone benches & Miele oven
- Three bedrooms with built-ins, master with ensuite, bed two with balcony
- Fully tiled bathrooms with stone flooring, ensuite features separate bathtub
- Internal laundry, entry foyer, Daikin ducted air conditioning throughout
- Lift access to secure side by side parking with storage, visitor parking on site
- Solid, double brick construction, finished to Mirvac's high quality standard
- 450m to St. Leonards station and 850m to Crows Nest's eclectic dining

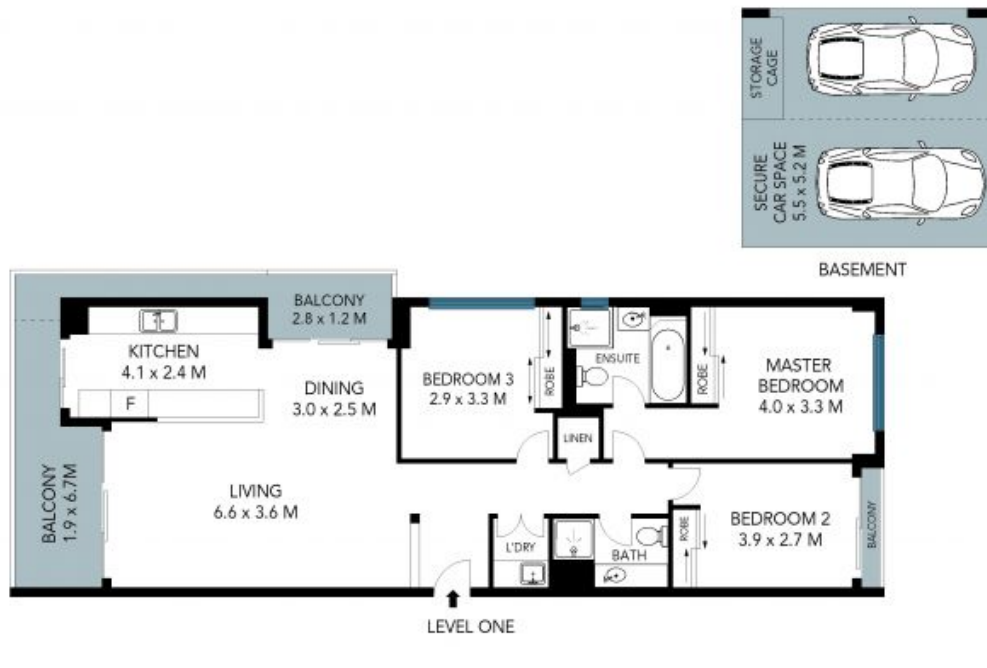
Price: SOLD PRIOR TO AUCTION
Council Rates: \$373.00 p/q
Water Rates: \$175.00 p/q
Strata Rates: \$1,380.00 p/q



Chris Keane
0497 102 114



Chris Keane
0497 102 114



The site plan and floor plan are not to scale; measurements are indicative and in metres. Bushes and trees are placed for illustration purposes. Plans should not be relied on. Interested parties should make and rely on their own enquiries. All other information provided has been collected from reliable sources but cannot be guaranteed for accuracy.