



12/25 Namadgi Circuit Palmerston, ACT

3 2 2

Immaculate and freestanding townhouse with stunning kitchen.

Experience modern comfort and convenience at 12/25 Namadgi Circuit, Palmerston. This updated three-bedroom freestanding townhouse offers a contemporary lifestyle with a recently renovated kitchen, separate living spaces, and an inviting entertaining courtyard. Adorned with new floating timber floors and carpets, this charming home exudes warmth and style, creating a bright and welcoming atmosphere.

The well-designed floor plan maximises space and natural light, with spacious living and extensive storage, the home is complemented by plenty of natural light through the day. The beautifully renovated kitchen provides for a central gathering area and seamlessly connects to the family and outdoor spaces, providing effortless flow for everyday living and entertaining.

...
 Three-bedroom townhouse with family-sized kitchen and separate living areas....
 New floating timber floors and new carpet in the bedrooms....
 Freshly painted throughout. ...
 Garage parking with floor to ceiling built in cupboards and space in front to park another...

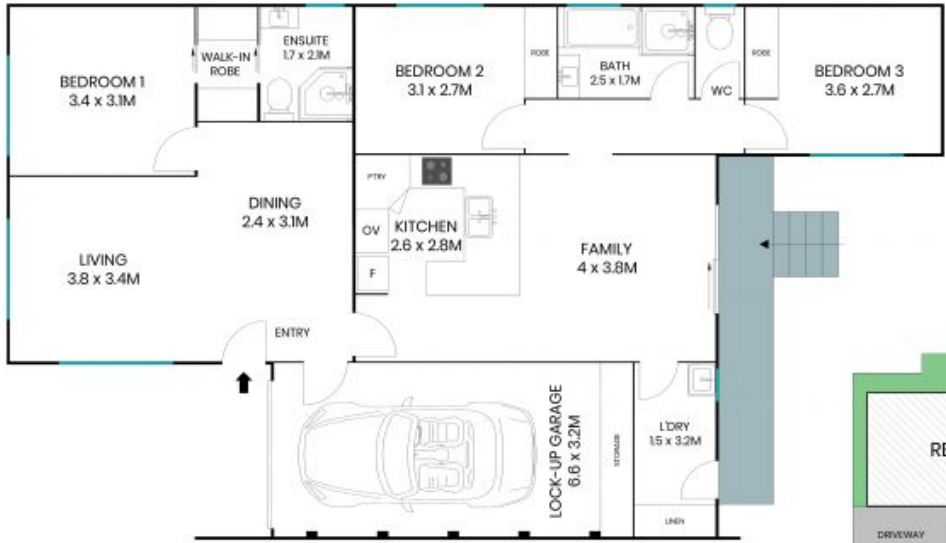
Inspect: Tuesday, 30th April 2024 5:00 - 5:30

Price: \$730,000+



Hugo Mendez

0421 349 916



Site Plan



The site plan and floor plan are not to scale; measurements are indicative and in metres. Bushes and trees are placed for illustration purposes. Plans should not be relied on. Interested parties should make and rely on their own enquiries. All other information provided has been collected from reliable sources but cannot be guaranteed for accuracy.

12/25 Namadgi Circuit
Palmerston



The floor plan is not to scale; measurements are indicative and in metres. All features included in this 3D plan are for inspiration purposes only. This is not an exact replica of the property or the position of exterior elements. Plans should not be relied on. Interested parties should make and rely on their own enquiries.