



10/2-8 Darley Road Manly, NSW 2  2  1 

### Sun-filled living in the heart of Manly

Set amongst the treetops in the cosmopolitan heart of Manly Village, this exceptional security apartment provides the ultimate lifestyle retreat with the world at the doorstep. Showcasing an open layout, stylish modern finishes and an extra-wide sunlit balcony with private leafy outlooks, it sits on the second floor of the exclusive 'Concorde Apartments' with lift access, shops, supermarkets and humming eateries at the doorstep plus Manly Wharf and Manly Beach only a two minute stroll away.

- Set high above the village amongst the tops of fig trees filled with birdlife
- Open floor living and dining areas seamlessly flow to a deep balcony
- Private covered entertainers' balcony with northeast aspect and leafy outlooks
- Chic galley style kitchen with stone benchtops and splashbacks plus dishwasher
- Spacious bedrooms, one with an ensuite, the second with built-ins and a Juliet balcony
- Gleaming white bathrooms with marble flooring plus an internal laundry
- Full brick, high ceilings and timber flooring in living/dining, ducted air con
- Literally footsteps to cafes and dining, short stagger to bars and brasseries

**Price:** \$1,800,000



**Candice Cattell**

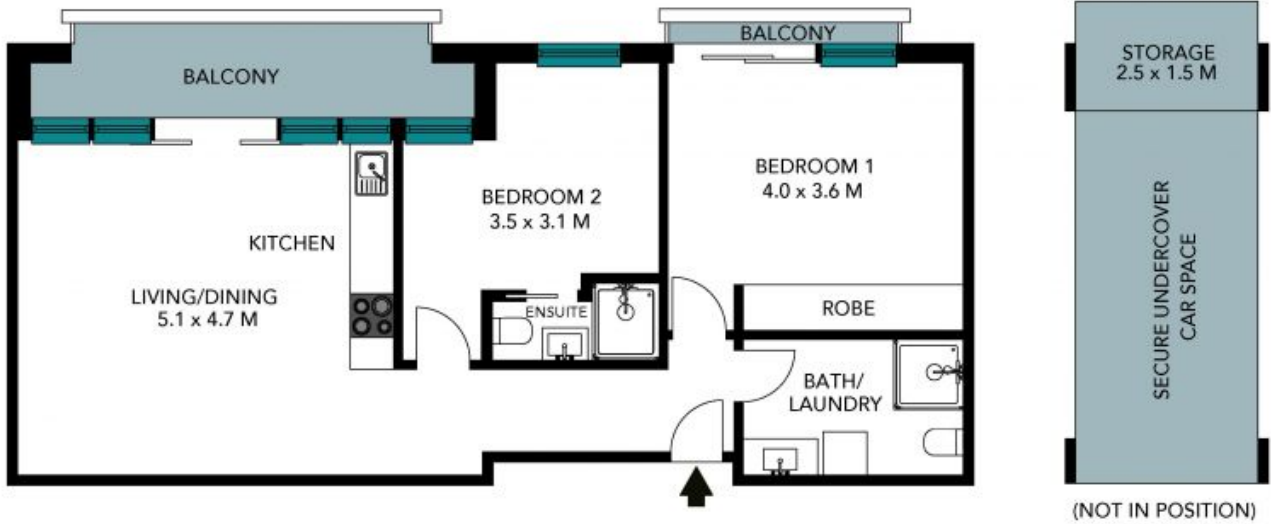
0417 311 777



**Sam Bursill**

0449 969 452

10/2-8 Darley Road,  
MANLY



The floor plan is not to scale, measurements are indicative and in metres. Exterior elements are not in position. Plans should not be relied on, interested parties should make and rely on their own enquiries. All other information provided has been collected from reliable sources but cannot be guaranteed for accuracy.