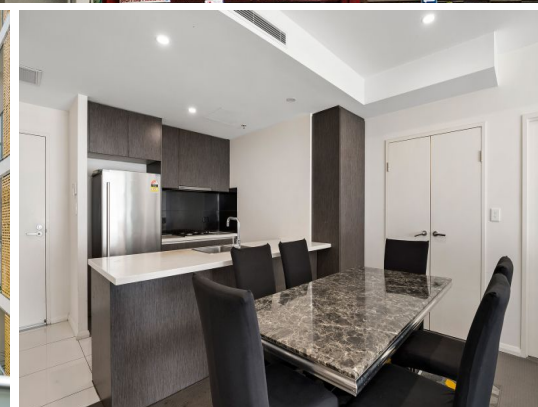


STONE



305/564 Princes Highway Rockdale, NSW



Ultra-convenient two-bedder plus study

A prime location and full-sized study set this spacious two-bedroom unit apart from the rest. Along with the convenient extra room, all main areas of the home extend onto a large covered balcony, providing an even greater sense of space and flexibility.

Park in the secure basement car space and make the most of the walk-everywhere location, with trains and Rockdale Plaza an easy five-minute walk away. Just 12km from the CBD and 2km from Brighton's beach and eat-street, the property is a perfect base for a vibrant lifestyle.

- Two bedrooms with built-ins and ensuite, plus full-sized study, guest room or play room

- Open-plan living and both bedrooms extend onto a large north-east facing balcony

- Lift access to secure parking space and storage room

Inspect:

Saturday, 18th May 2024 9:00 - 9:30

Price:

FOR SALE | \$740,000 - \$780,000

Strata Rates:

\$971.76 p/q



George Kambouroglou

0422 421 111



George Kambouroglou

0422 421 111

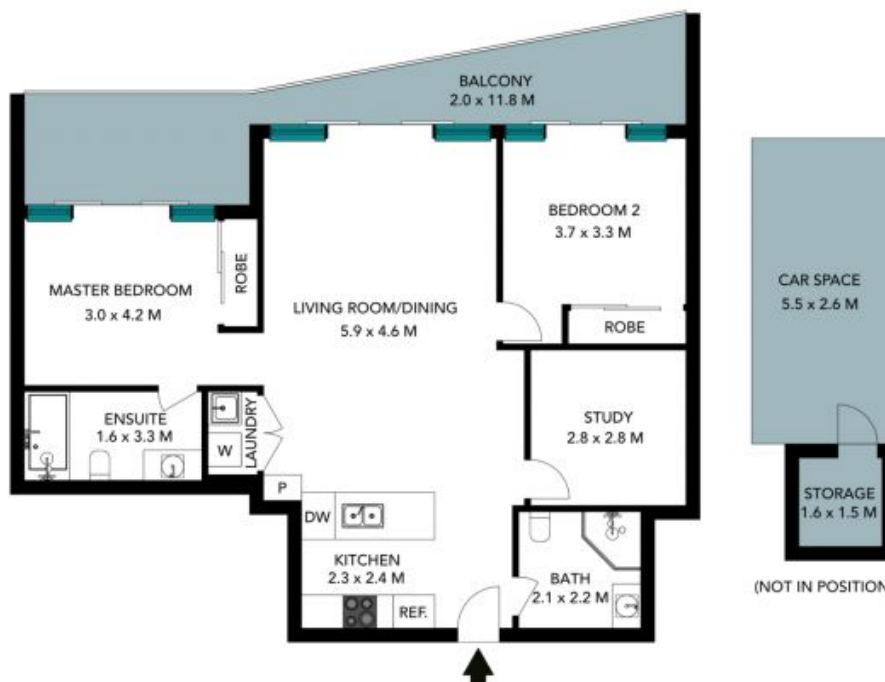
305/564 Princes Highway
Rockdale



The floor plan is not to scale; measurements are indicative and in metres. All features included in this 3D plan are for inspiration purposes only. This is not an exact replica of the property or the position of exterior elements. Plans should not be relied on. Interested parties should make and rely on their own enquiries.

305/564 Princes Highway
Rockdale

STONE



The floor plan is not to scale. Measurements are indicative and in metres. Exterior elements are not in position. Plans should not be relied on. Interested parties should make and rely on their own enquiries. All other information provided has been collected from reliable sources but cannot be guaranteed for accuracy.