



302/118 Princes Highway Arncliffe, NSW



Sunny near-new haven in central hub

Discover unbelievable value and amenity within 10km of the CBD in this chic near-new apartment. Part of the stylish Endeavour Apartments, completed in 2018, the third-floor home basks in a bright north-westerly aspect, with pleasant district views to Botany Bay.

The home's elevated position captures fresh bay breezes, with an open-plan layout and ceiling-height sliding doors to the balcony ensuring a wonderful sense of free-flowing space.

Walk just 400 metres to trains, shops and dining in Arncliffe's village centre, or 800 metres to waterfront parklands and cycling trails at Wolli Creek. With the airport just a few minutes away, and inner-west hotspots a short drive up the road, this could be your ticket to a dynamic lifestyle.

- Six years-young, fourth-floor apartment

Inspect:

Saturday, 11th May 2024 11:00 - 11:30

Price:

FOR SALE | \$769,000



Sam Abbas

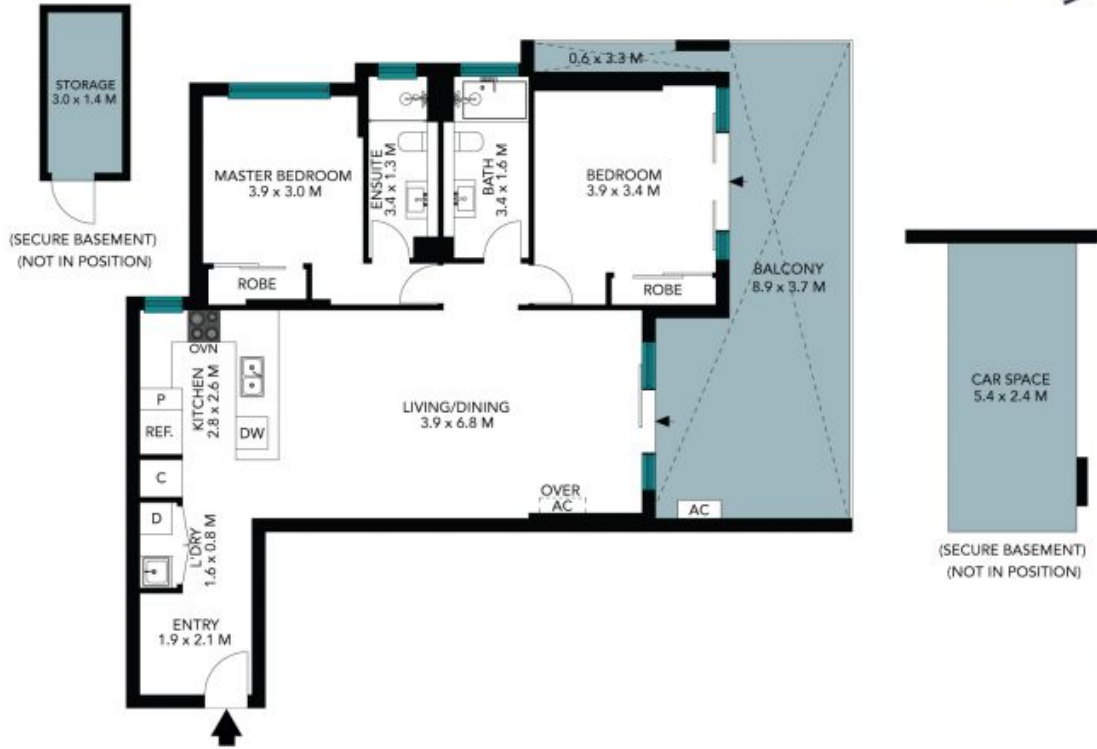
0406 750 075



Tanios Azzi

0412 772 369

302/118 Princes Highway
Arncliffe



The floor plan is not to scale, measurements are indicative and in metres. Exterior elements are not in position. Plans should not be relied on. Interested parties should make and rely on their own enquiries. All other information provided has been collected from reliable sources but cannot be guaranteed for accuracy.

302/118 Princes Highway

Arncliffe

STONE



The floor plan is not to scale; measurements are indicative and in metres. All features included in this 3D plan are for inspiration purposes only. This is not an exact replica of the property or the position of exterior elements. Plans should not be relied on. Interested parties should make and rely on their own enquiries.