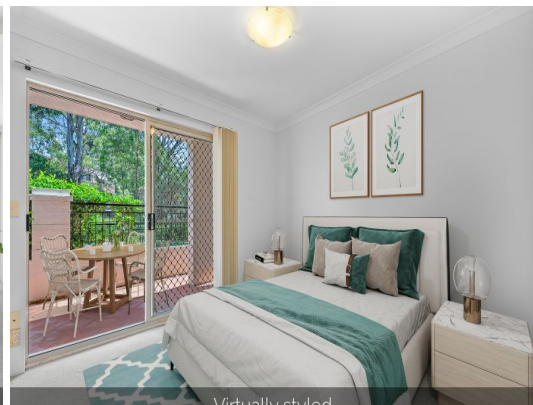




Virtually styled



Virtually styled



55/6-8 Nile Close Marsfield, NSW



### Private poolside apartment near Macquarie Uni precinct

Boasting a serene resort-style ambience within the popular Forester Estate, this carefree 'Cypresswood' apartment offers the best of both worlds as a rewarding investment or a relaxing entry-level home. Fresh carpet, paintwork and a spacious double brick layout make it move-in ready - while its poolfront views, residential tennis court and BBQ facilities, and rapid 750m approx. access to Macquarie Uni/health precinct make it an opportune choice for market entrants, leisure seekers, or those wanting quiet retreat in a highly sought-after pocket.

- Peacefully private, entry level, low maintenance apartment with security intercom
- Quality stone bench kitchen equipped with a gas cooktop and Bosch dishwasher
- Open plan living and dining area featuring split system air con and gas outlet
- Carpeted and mirror-robed bedrooms, main has an ensuite and private courtyard
- Full bathroom with a separate bath and shower, hideaway laundry, linen press
- Pool-view sun terrace ideal for outdoor entertaining, visitor parking on-site
- Easy 450m approx. stroll to Trafalgar Square village shops/amenities and cafe

**Price:** Sold \$810,000  
**Council Rates:** \$338.00 p/q  
**Strata Rates:** \$2,180.00 p/q



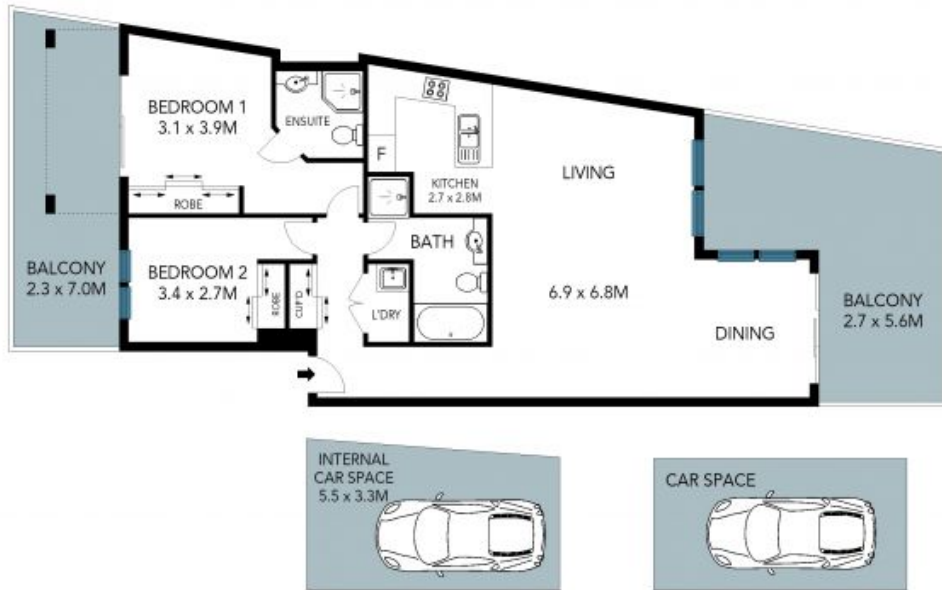
**Kevin Dearlove**

0403 338 302



**Vincent Goh**

0412 316 797



The site plan and floor plan are not to scale; measurements are indicative and in metres. Bushes and trees are placed for illustration purposes. Plans should not be relied on. Interested parties should make and rely on their own enquiries. All other information provided has been collected from reliable sources but cannot be guaranteed for accuracy.