



1A Wilkinson Lane Telopea, NSW



## Modern, free-flowing home in Carlingford West Public catchment

Unveiling luxurious sophistication, this 2022-built home boasts house-like proportions and a thoughtful, spacious design. Its stylish interiors benefit from a north-facing rear aspect and are enriched by high-end finishes, offering an unparalleled contemporary lifestyle. Zoned for Carlingford West Public and Cumberland High, it's located just a stroll to transport and shops.

- Perched on the high side of the street and boasting stunning district views
- Plenty of room to spread out, with multiple bright and airy living spaces
- Indoor-outdoor entertaining ease, with all-weather outdoor kitchen and sundeck
- Open plan gas kitchen with breakfast bar, walk-in pantry and Smeg appliances
- Generous master bed with walk-in, balcony, deluxe ensuite and a ceiling fan
- Three more sizeable bedrooms, with built-ins, and flexible upstairs study nook
- Indulgent family bathroom with freestanding bathtub and a corner rain shower
- Single auto lock-up garage, internal laundry, solar system, ducted zoned a/c

**Price:** Auction 3:45pm this Saturday 17th Feb  
**Council Rates:** \$386.54 p/q  
**Water Rates:** \$171.41 p/q



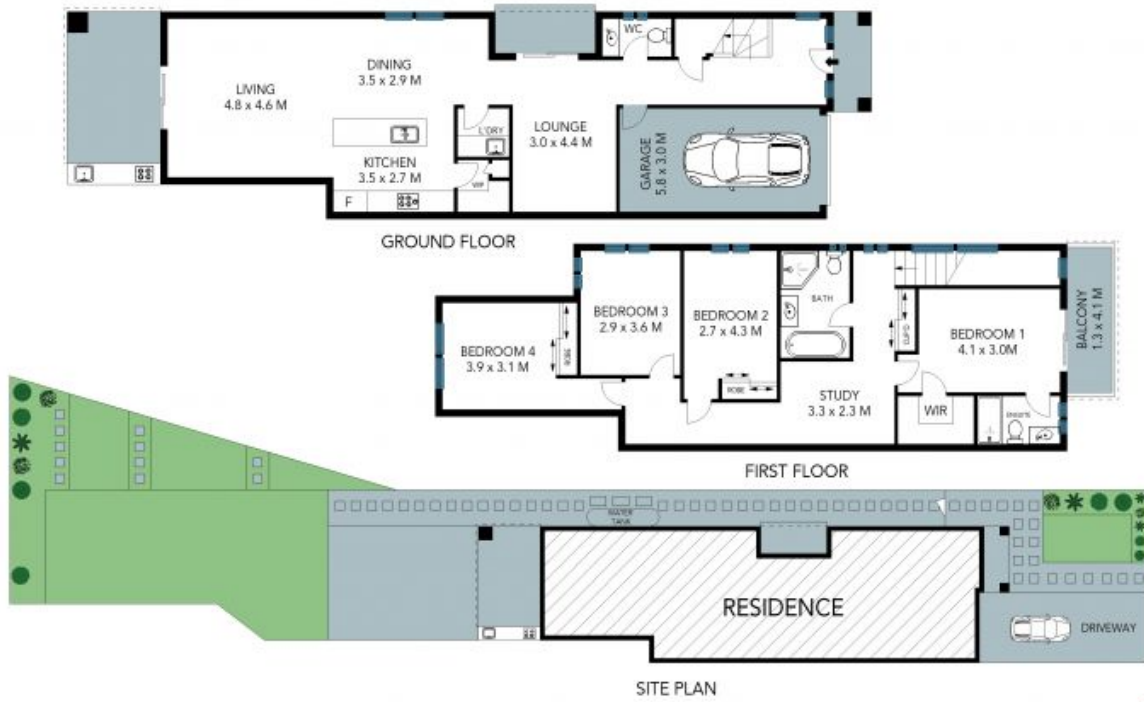
**Jeff Jianfu Luo**

0425 286 668



**Vivian Wang**

0433 858 225



The site plan and floor plan are not to scale; measurements are indicative and in metres. Bushes and trees are placed for illustration purposes. Plans should not be relied on. Interested parties should make and rely on their own enquiries. All other information provided has been collected from reliable sources but cannot be guaranteed for accuracy.