



5/2 Raglan Street Mosman, NSW

2

1

1

Waterfront Living at its finest

Superbly poised and elevated in position capturing spectacular panoramas across Sydney Harbour, Eastern suburbs and beyond. This stunning residence promises an idyllic indoor/outdoor lifestyle of relaxed sophistication. With level lift access, it's an ideal choice for downsizers, while investors can enjoy strong returns. It's set in an exclusive waterfront enclave on Curraghbeena Point, with private access to South Mosman Wharf.

- Immaculate open living and dining areas enjoy abundant light and uninterrupted water views
- Elevated harbour views and balcony perfect for relaxing and enjoying alfresco meals
- Ten minutes to Circular Quay from Mosman Bay South on the ferry
- Stunning kitchen reveals Bosch appliances, dishwasher and mirrored splashbacks reflecting the harbour

Price:

Contact Marize Bellomo



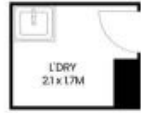
Marize Bellomo

0414 972 203

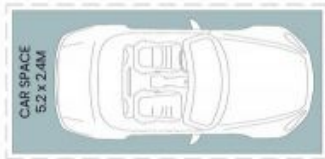


Darren Smith

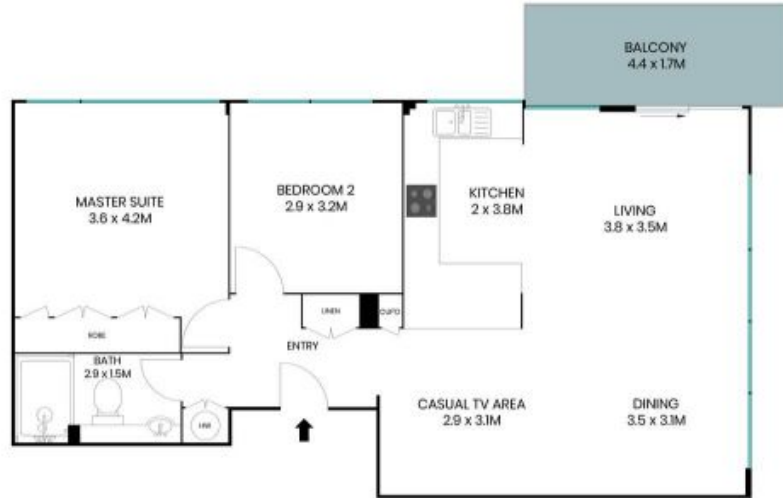
0434 373 363



Communal Laundry Level Three



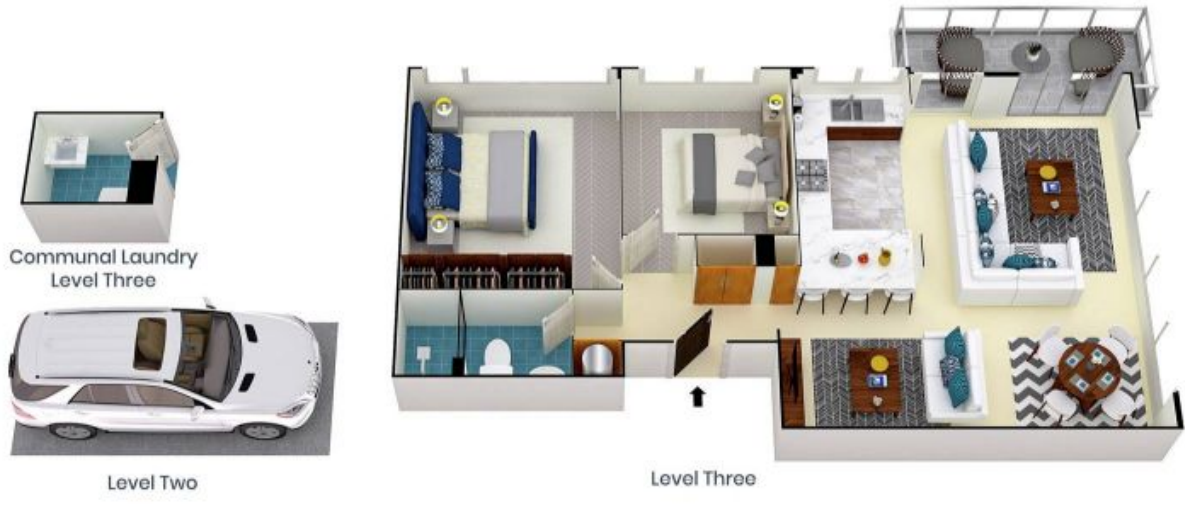
Level Two



Level Three



The site plan and floor plan are not to scale; measurements are indicative and in metres. Bushes and trees are placed for illustration purposes. Plans should not be relied on. Interested parties should make and rely on their own enquiries. All other information provided has been collected from reliable sources but cannot be guaranteed for accuracy.



The floor plan is not to scale; measurements are indicative and in metres. All features included in this 3D plan are for inspiration purposes only. This is not an exact replica of the property or the position of exterior elements. Plans should not be relied on. Interested parties should make and rely on their own enquiries.