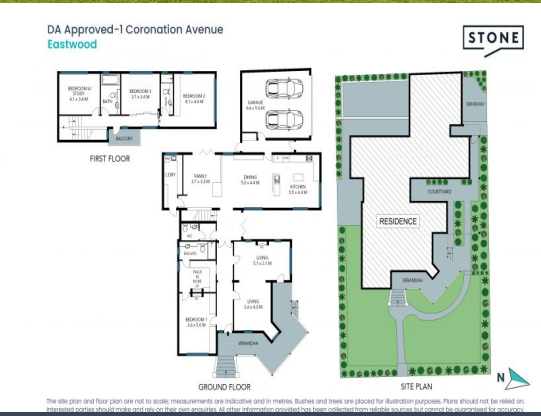
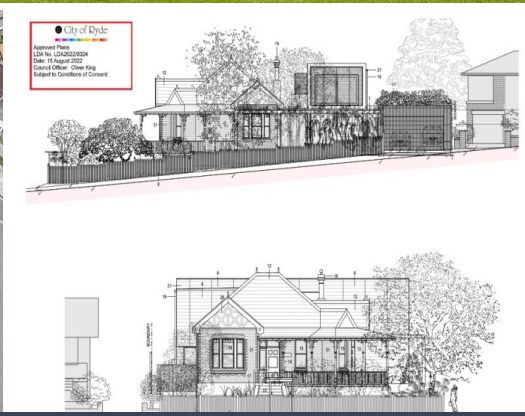


STONE



1 Coronation Avenue Eastwood, NSW 4 1 1

Character Home blends with DA-approved modern scope

Steeped in early century grace and nestled in an idyllic, popular family pocket, 'Helvetia' c1920 combines historic charm with modern amenities and boasts DA-approved plans for an extension, blending modernity with character into a unique and sizeable family home. Boasting an ultra-convenient 'walk to everything' lifestyle, it's set in the catchment for sought-after Eastwood Public and within easy reach of prestigious private school options.

- Secure tenancy an immediate income stream; Corner block, two frontages
- DA-approved plans offer multiple living spaces, beds/ensuites, double LUG
- Charming character features including high ornate ceilings and timber floors
- Versatile layout with large formal living and dining rooms plus a family room
- Tall entry hallway leads to four generous bedrooms, two with built-in robes
- Updated gas kitchen with dishwasher and spacious family eat-in meals area
- Fully tiled bathroom with separate bath and shower; Bonus guest w/c
- Approx. only 700m to Eastwood shops, 1.2km to Eastwood train station

Price: For Sale
Council Rates: \$457.00 p/q
Water Rates: \$195.00 p/q

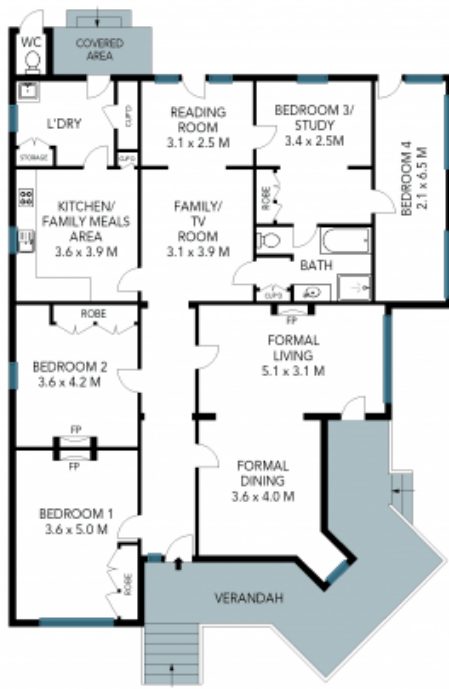


Vincent Goh
0412 316 797

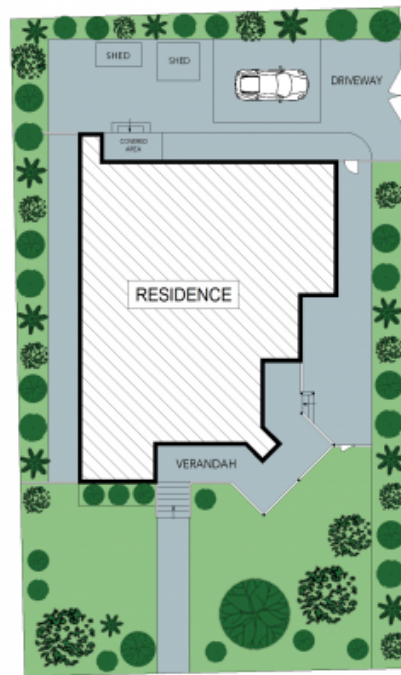


Karlton Zheng
0431 363 504

Existing-1 Coronation Avenue
Eastwood



GROUND FLOOR



SITE PLAN

The site plan and floor plan are not to scale; measurements are indicative and in metres. Bushes and trees are placed for illustration purposes. Plans should not be relied on. Interested parties should make and rely on their own enquiries. All other information provided has been collected from reliable sources but cannot be guaranteed for accuracy.