



Surfers Paradise, QLD



## Elevate your expectations

Welcome to Vista. Soaring 51 levels into the Gold Coast skyline, Vista's 280 apartments and unique collection of townhomes will set new standards for stylish and sustainable coastal living.

Set back from the beach in sought-after Northcliffe, Vista embodies the best of Gold Coast living. It is immersed in nature, just moments from soft sand, sparkling sea and meandering waterways. Surrounded by urban sophistication, the vibrant dining and retail precincts of Surfers Paradise and Broadbeach are also just a short walk or light rail stop away.

Vista's architectural vision brings a new level of coastal elegance to the Gold Coast skyline. Organic forms mirror the fluid curves of the nearby Nerang River, while lush tropical landscapes cascade to provide shade and seclusion.

This is refined living made easy. With 280 apartments available, ranging from 1- and 2-bedroom sanctuaries to spacious 3- and Discover life, elevated....

Price:

Apartments for sale



**Jason Good**

0426846965

Nº 26

# VISTA

RESIDENCES

## TOWNHOME 1

3 Bedroom

2 Car Space

2.5 Bathroom

Internal 175m<sup>2</sup>

External 42m<sup>2</sup>

Total 217m<sup>2</sup>



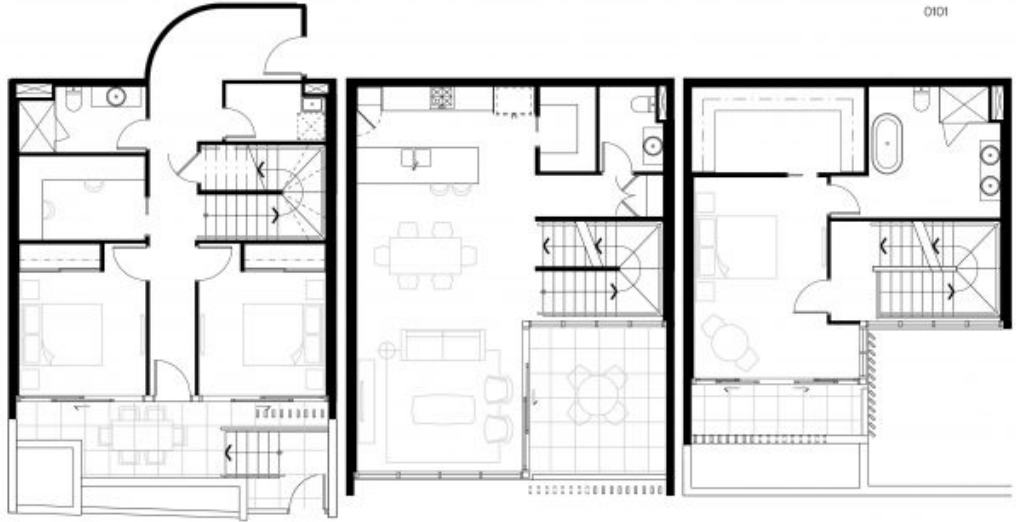
[26vista.com.au](http://26vista.com.au)

**IMPORTANT DISCLAIMER, PLEASE READ CAREFULLY**  
Indicative only. Dimensions, design features, floor areas, specifications and room configurations are subject to change without notice. Any fixtures shown are not included. The development is not completed and so the final product may differ from that depicted on this floorplan. Buyers should refer to and rely on the Identification Plan included in the Disclosure Document, subject to variations in accordance with Contract Terms, Version 1, 28/10/2022.



LOT NUMBERS

0101



LOWER FLOOR  
Internal 68m<sup>2</sup>  
External 16m<sup>2</sup>

MID FLOOR  
Internal 63m<sup>2</sup>  
External 14m<sup>2</sup>

UPPER FLOOR  
Internal 44m<sup>2</sup>  
External 12m<sup>2</sup>

