



22/309-311 Peats Ferry Road Asquith, NSW

2 2 1

**Sold by Geraldine Wang 0452 562 183**

Sold by Geraldine Wang 0452 562 183

This spacious apartment offers a convenient lifestyle in a quiet and private location with an easy stroll to Coles, Asquith station, Asquith Boy High School and the park. Only minutes' drive to great local schools, Hornsby Westfield and Hornsby station. It is ideal for a family to take advantage of highly sought-after Hornsby North school catchment, first home buyer looking for convenient modern living, and investors seeking best value for money.

**Price:** Sold by Geraldine Wang 0452 562 183  
**Council Rates:** \$344.60 p/q  
**Water Rates:** \$290.77 p/q



**Geraldine (Xiao-Bin) Wang**  
 0452 562 183

22/309 Peats Ferry Road  
Asquith

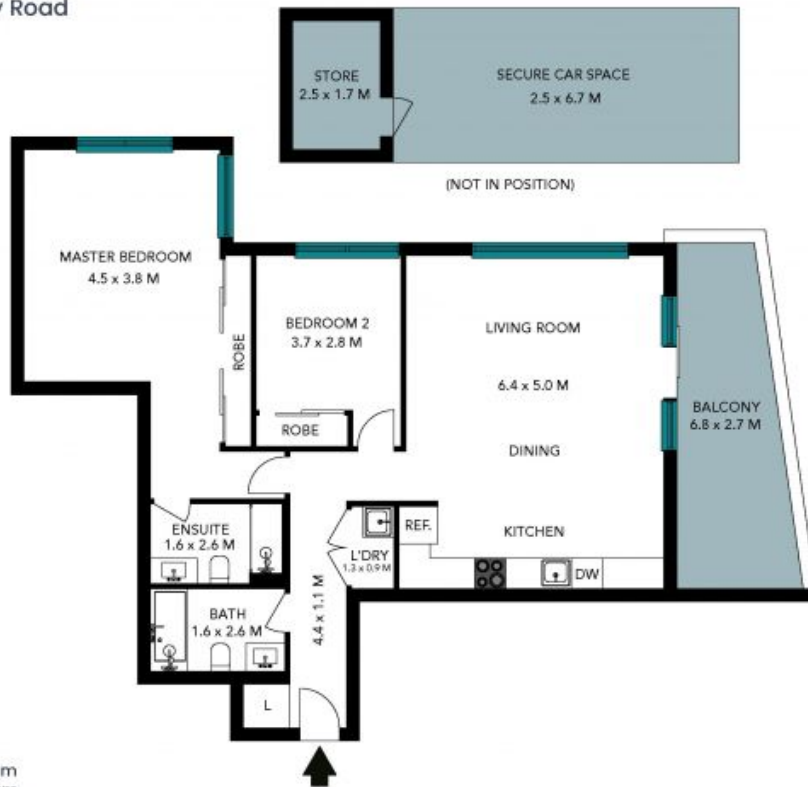


Internal Living: 86 sqm  
External Living: 15 sqm  
Total Living Area: 101 sqm



The floor plan is not to scale; measurements are indicative and in metres. All features included in this 3D plan are for inspiration purposes only. This is not an exact replica of the property or the position of exterior elements. Plans should not be relied on. Interested parties should make and rely on their own enquiries.

22/309 Peats Ferry Road  
Asquith



Internal Living: 86 sqm  
External Living: 15 sqm  
Total Living Area: 101 sqm



The floor plan is not to scale, measurements are indicative and in metres. Exterior elements are not in position. Plans should not be relied on. Interested parties should make or rely on their own enquiries. All other information provided has been collected from reliable sources but cannot be guaranteed for accuracy.