

189/208-226 Pacific Highway Hornsby, NSW 2 2 1

## East Facing 'Horizon Towers' Apartment

Access to Block E is via Leonard Street

Nestled in the upscale "Horizon Towers," discover a modern, immaculately kept unit on the 7th floor. This residence not only exudes contemporary elegance but also provides a refreshing sense of space and privacy, all complemented by its coveted east-facing orientation. Newly renovated with brand new carpet, fresh paint throughout and new appliances, this is an opportunity not to be missed.

Featuring bright and airy interiors, generously sized bedrooms, and premium finishes, this unit is conveniently located just a brief walk from Hornsby's train and bus interchange, Westfield shopping center, parks, and schools, offering the potential for both an exceptional home and a smart investment with promising growth and rental prospects.

Features:

- 24-hour building security

...

**Inspect:** Saturday, 11th May 2024 1:15 - 2:15

**Price:** \$670,000 - \$685,000

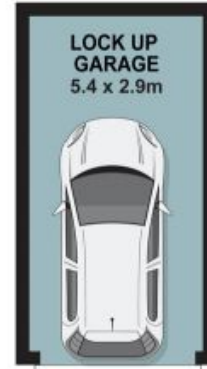
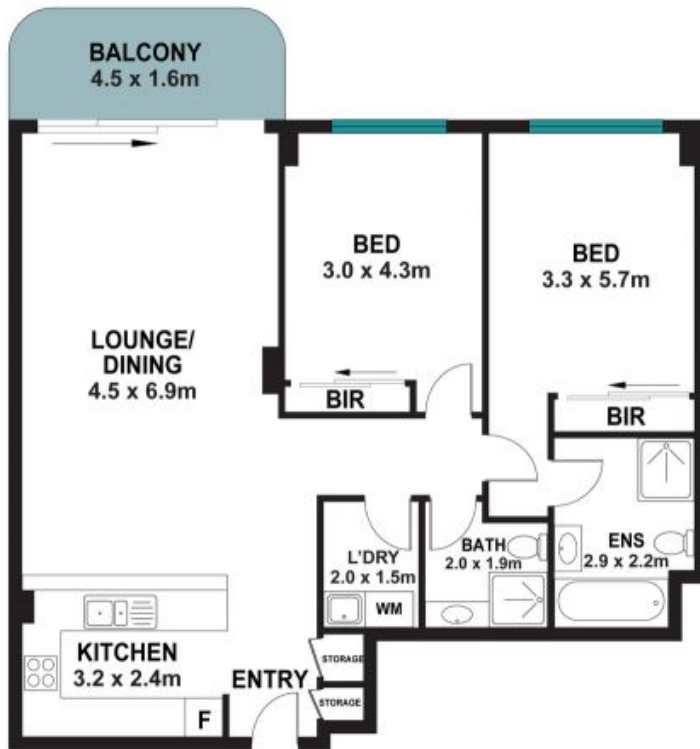
**Council Rates:** \$313.90 p/q



**Adam Noakes**

0450 753 268

189/208 Pacific Highway,  
Hornsby



The floor plan is not to scale, measurements are indicative and in metres. Exterior elements are not in position. Plans should not be relied on, interested parties should make and rely on their own enquiries. All other information provided has been collected from reliable sources but cannot be guaranteed for accuracy.