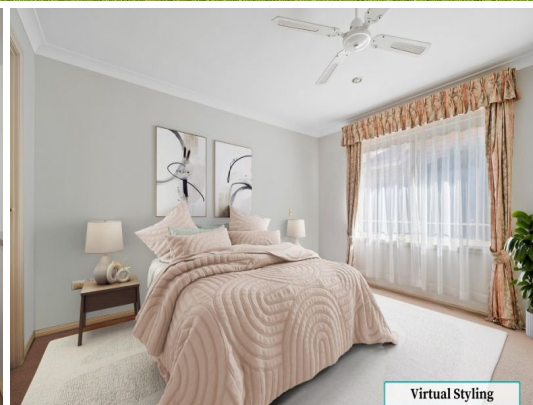




Virtual Styling



Virtual Styling



Virtual Styling

18/7 Stonelea Court Dural, NSW



Affordable over 55's living

Looking to downsize? Then look no further ?. Spacious single-level, ground floor, Strata Title villa with lock-up garage enjoying a premium, prime position within the ultra-convenient 'Mountainview' Retreat, a sought-after over 55's retirement village at Round Corner Dural. Convenience is an understatement being approx. 100m to local bus transport and approx. 350m to Shops, eateries, medical facilities, and essential amenities (closer via a walkway).

Enjoy your independence whilst benefiting from an easy care, low-maintenance lifestyle without compromising on the quality of life, location or size. To arrange an inspection, and receive additional information including the Disclosure Statement and village fees just give us a call, happy to meet onsite at a convenient day and time.

- Premium end position bordered by greenery & grass lawn
- Positioned opposite Village Community Centre & visitor car park
- 2 double bedrooms both with built-in robes & ceiling fans
- Spacious, fully tiled 2-way bathroom

Price: \$580,000
Council Rates: \$281.00 p/q
Water Rates: \$171.41 p/q
Strata Rates: \$676.35 p/q



Viviane Mylott

0438 983 615



Jane Booty

0412 207 452



The site plan and floor plan are not to scale; measurements are indicative and in metres. Bushes and trees are placed for illustration purposes. Plans should not be relied on. Interested parties should make and rely on their own enquiries. All other information provided has been collected from reliable sources but cannot be guaranteed for accuracy.