



1/36 Forest Street Whittlesea, VIC

2 1 2

Perfect location with a huge courtyard

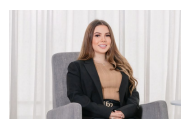
This ground floor apartment is arguably the best in the complex. Beautifully maintained, with plenty of natural light this 2 bedroom home is perfect for first home buyers, investors, downsizers or professionals. With multiple designated off-street parking spaces, hardwood floors throughout on the ground level and a huge courtyard, this home is not one to miss out on.

Price: \$380,000



Dean Zammit

0405 140 704



Teleisha Godfrey

0407 529 378



The floor plan is not to scale, measurements are indicative and in metres. Exterior elements are not in position. Plans should not be relied on, interested parties should make and rely on their own enquiries. All other information provided has been collected from reliable sources but cannot be guaranteed for accuracy.

1/36 Forest Street
Whittlesea



The floor plan is not to scale; measurements are indicative and in metres. All features included in this 3D plan are for inspiration purposes only. This is not an exact replica of the property or the position of exterior elements. Plans should not be relied on. Interested parties should make and rely on their own enquiries.