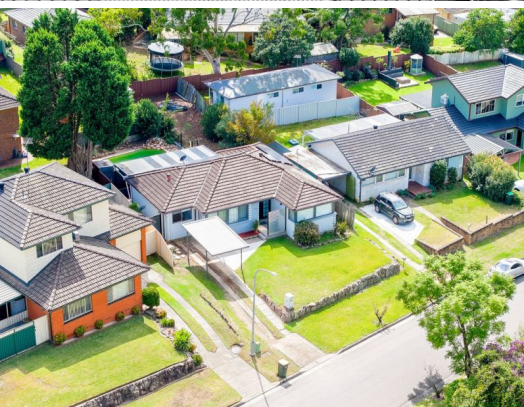


STONE



13 Poplar Crescent Bradbury, NSW

4 

2 

1 

CDC approved to build 3 bedroom granny flat

Convenience, potential and luxury

This immaculately presented residence is positioned on an impressive 727sqm block situated in a sought-after street in Bradbury. Offering comfortable living with plenty of room for the whole family, with open plan living and an amazing backyard for entertaining with a pool and decking area.

This home is light filled and spoilt with large open plan living that makes this ideal for families of all sizes or simply for someone who loves to entertain. Recently updated with renovations throughout the home with sleek floorboards throughout and feature lights in the living and kitchen.

Key features:

- > Pool
- > Solar system
- > Storage shed

Price:

\$929,000 - \$1,019,000



Andrew Diadyk

0422 164 657



Danyal Mushtaq

0479 178 429

13 Poplar Crescent
Bradbury

STONE



The floor plan is not to scale; measurements are indicative and in metres. All features included in this 3D plan are for inspiration purposes only. This is not an exact replica of the property or the position of exterior elements. Plans should not be relied on. Interested parties should make and rely on their own enquiries.

CAR PARK
3.0 x 5.0 M



1.2 x 2.0 M

(NOT IN POSITION)

STORE
3.0 x 2.0 M

(NOT IN POSITION)

POOL
6.2 x 4.0 M

(NOT IN POSITION)

