



5 Seale Crescent Leumeah, NSW



Quiet Cul-de-sac living

Nestled in a peaceful cul-de-sac in leafy Leumeah, this beautifully presented four-bedroom family home offers a perfect blend of comfort and convenience. Situated on a generous 645m² block, this residence boasts multiple living areas and a range of modern inclusions, making it the ideal haven for families.

Price: \$770,000 - \$810,000



Gary Luke

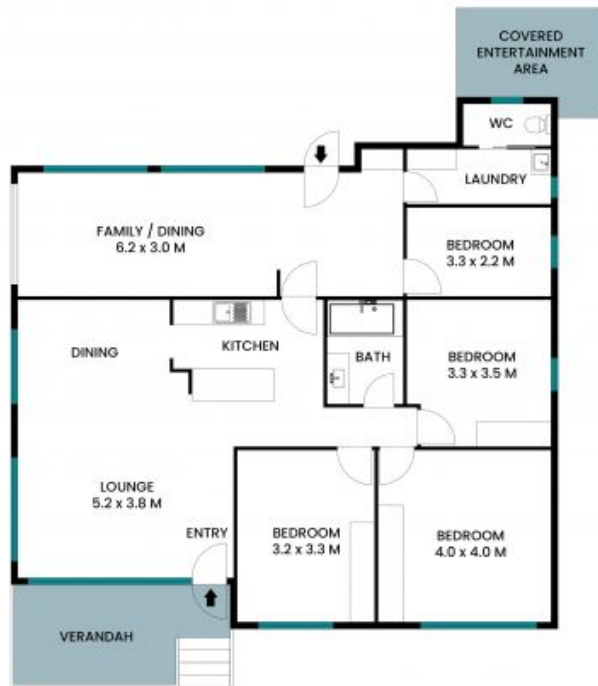
0418 451 105



Kaitlin Hall

0404 529 516

5 Seale Crescent
Leumeah



Floor Plan