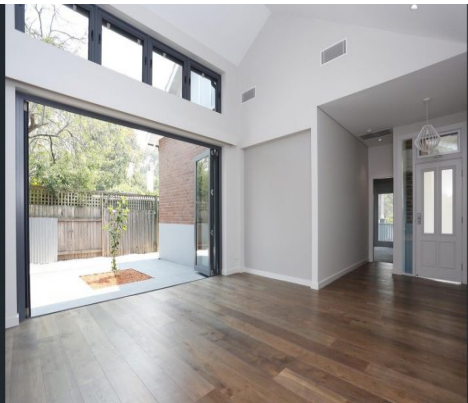


STONE



14 Muttama Road Artarmon, NSW



MODERN ARCHITECTURALLY DESIGNED HOME IN A FANTASTIC LOCATION.

This fantastic & modern architecturally designed home is a rare and amazing rental opportunity.

Features Include:

- * High cathedral ceilings in the living area leading out to private and sunny courtyard.
- * The house has been designed to take advantage of natural light creating a grand and modern home on the inside while maintaining the character of a period home from the outside.
- * Quality finishes and design features throughout.
- * Large modern kitchen with white stone benchtops, butler's pantry and modern appliances.
- * Open plan living and dining areas with floorboards and lots of natural light
- * Master bedroom privately located on the second level featuring a large modern built in wardrobe and sophisticated ensuite bathroom with heated flooring.
- * Large second bedroom with walk-through wardrobe and modern ensuite bathroom.
- * Ducted air conditioning

Price: \$2,000 pw

Bond: \$8,000

Available Date: 08/03/2024



Jacqui Stanley

0419 024 043

14 Muttama Road, Artarmon



Please note: All stated dimensions are approximate only. Particulars given are for general information only and do not constitute any representation on the part of the vendor or agent.