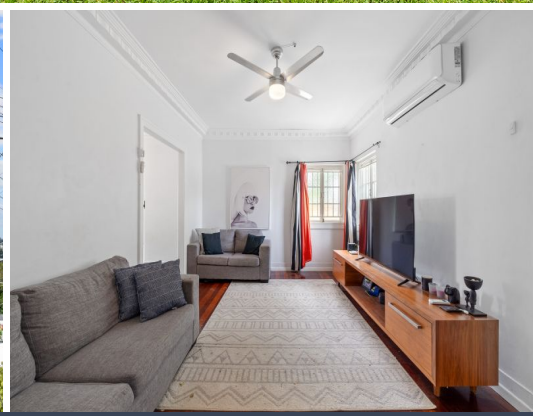


Potential Views from 7m



213 Rode Road Wavell Heights, QLD

2 1 2

City View Potential

Sitting on a large 617sqm block and boasting city views from 7 meters, this neatly presented lowset home is immediately livable yet so much scope to expand and grow later. This homes potential is only rivalled by its incredible position.

- Large 617sqm block
- North/South facing aspect.
- Potential city views from 7m
- Electric front gate
- Town gas connected
- Large powered shed
- Rheem gas hot water system
- Split-system air-conditioning

Price: offers over \$925,000



Tristan Rowland
0411 572 970

INTERNAL 95 SQM
EXTERNAL 74 SQM
TOTAL 169 SQM



The site plan and floor plan are not to scale; measurements are indicative and in metres. Bushes and trees are placed for illustration purposes. Plans should not be relied on. Interested parties should make and rely on their own enquiries.

213 Rode Road, Wavell Heights

stoneaspley.com.au

