



22 Gleason Street McDowall, QLD



### Well Presented family home

This beautifully presented family home is set on an elevated block, in a quiet and peaceful street just a short stroll from parkland, and only minutes' walk from bushland reserve, McDowall State School and public transport options. Offering room for the extended family, dual living or work from home office, this home will fulfil all the family's needs with ease.

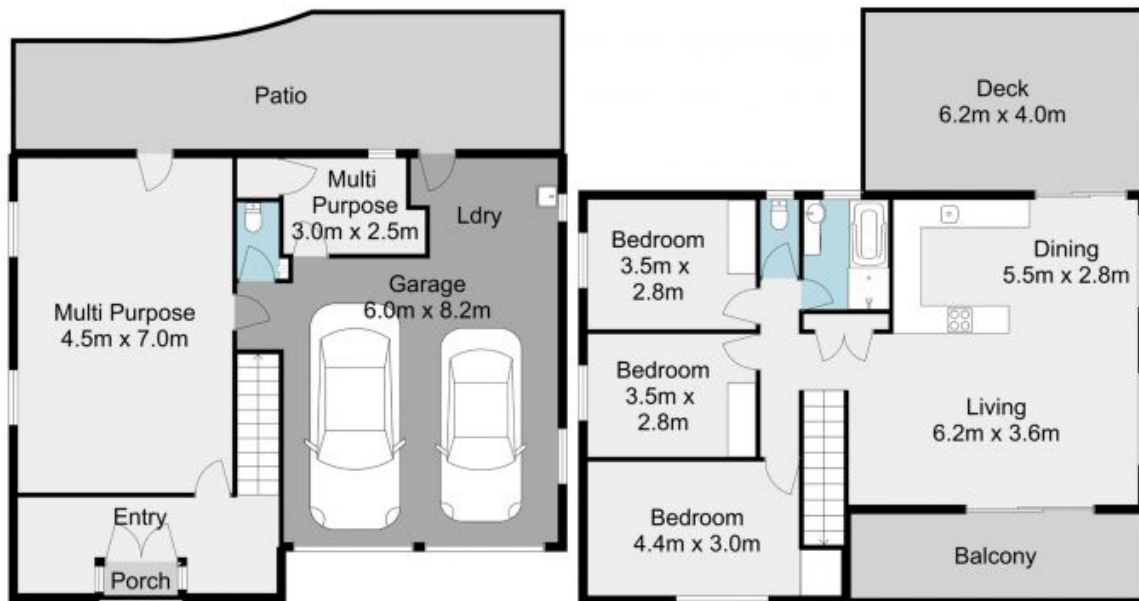
- 582sqm low maintenance block
- Hardwood timber frame and flooring
- Multiple living areas to suit the whole family
- Large rear deck with incredible mountain views
- Potential side access for caravan or boat
- Fully fenced, pet friendly yard
- Hybrid Fibre Coaxial (HFC) NBN connection
- McDowall State School catchment

This home offers:



**John Bradley**

0410 454 718



**Level 1**

**Level 2**

The site plan and floorplan are not to scale; measurements are indicative and in metres. Bushes and trees are placed for illustration purposes. Plans should not be relied on. Interested parties should make and rely on their own enquiries.

**22 Gleason Street, McDowall**

stonespley.com.au