

2506/330 Church Street Parramatta, NSW      2      2      1

### Luxurious Apartment with Captivating Views

Positioned on Level 25 of the prestigious Altitude complex, this beautifully designed two-bedroom apartment encompasses light filled interiors and uninterrupted skyline views. Situated in the heart of the Parramatta CBD, find yourself just moments from world-class dining, shopping and transport including trains, buses, RiverCat ferry and the upcoming light rail.

Price:      UNDER CONTRACT



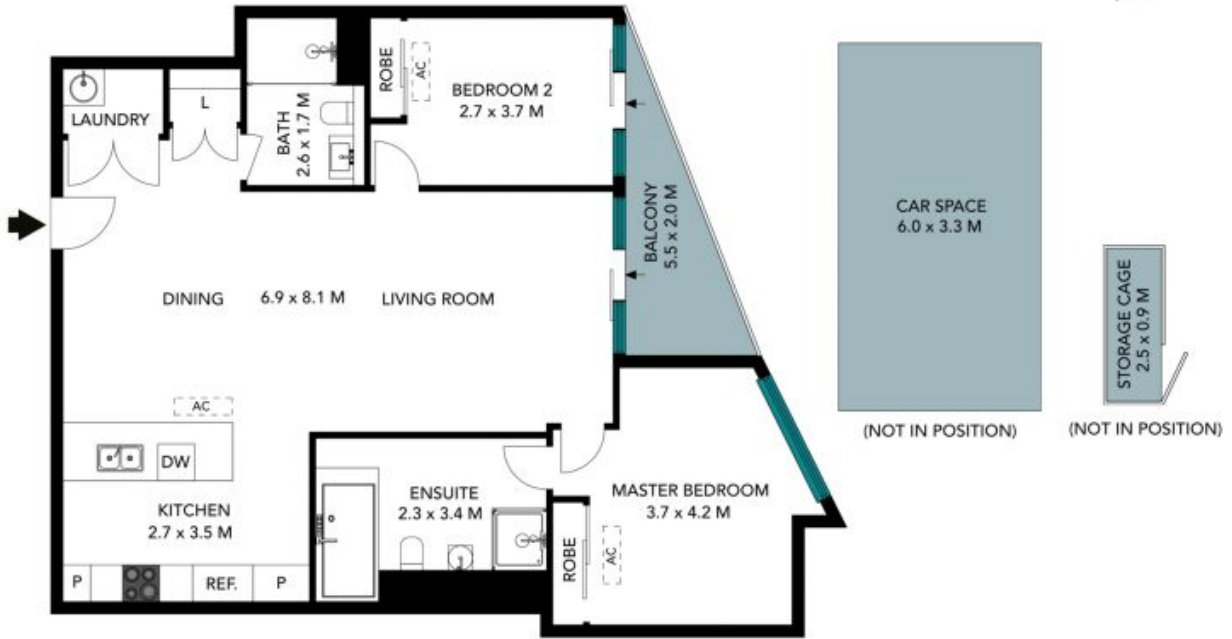
**Aaron Lih**  
0420 825 598



**Nicola Reilly**  
0405 203 525

2506/330 Church Street  
Parramatta

STONE



The floor plan is not to scale, measurements are indicative and in metres. Exterior elements are not in position. Plans should not be relied on, interested parties should make and rely on their own enquiries. All other information provided has been collected from reliable sources but cannot be guaranteed for accuracy.

2506/330 Church Street  
Parramatta

STONE



The floor plan is not to scale; measurements are indicative and in metres. All features included in this 3D plan are for inspiration purposes only. This is not an exact replica of the property or the position of exterior elements. Plans should not be relied on. Interested parties should make and rely on their own enquiries.