



G16/610 Mowbray Road Lane Cove, NSW



### Easy to Love

- Quality finishes, timber-look tiled floors and air-conditioning
- Living/dining with Ilve stone gas kitchen
- Seamless flow from lounge room to private pet-friendly courtyard
- Master bedroom w/ access to courtyard & large double bedroom w/ build-ins
- Large multi-use study
- Fully-tiled bathrooms, concealed laundry
- Rubbish chute on same level for ease and convenience
- Private rooftop terrace with gas BBQ equipment to enjoy sunset views



**Alex Andonian**

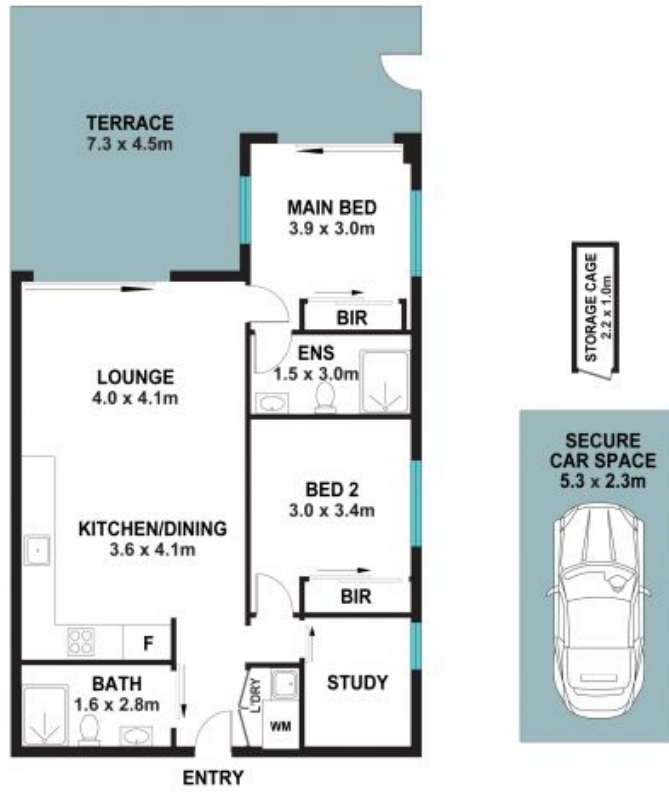
0432 018 535



**Jimmy Psaltis**

0411 129 221

G16/610 Mowbray Road,  
Lane Cove North



The floor plan is not to scale, measurements are indicative and in metres. Exterior elements are not in position. Plans should not be relied on interested parties should make and rely on their own enquiries. All other information provided has been collected from reliable sources but cannot be guaranteed for accuracy.