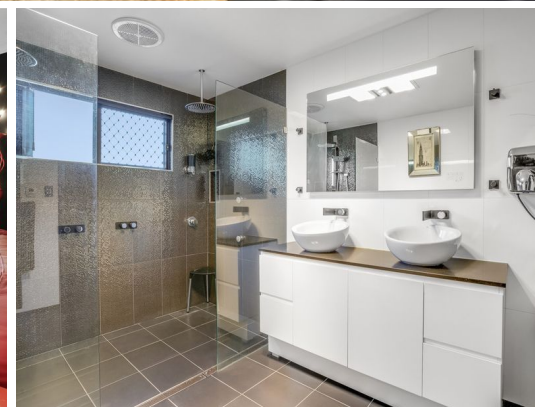


STONE



58 The Esplanade Ettalong Beach, NSW

2

2

Superb position in Ettalong opposite the Box Caf?

This home features a large covered entertaining deck with two bedrooms and two bathrooms

- * Ducted air, security shutters, natural gas, loft for storage
- * 2 bedrooms, 2 bathrooms plus an additional powder room
- * The main bathroom has a double shower and under floor heating
- * The stunning kitchen has a butler's pantry, servery bench to the outside & second oven
- * Inside features timber floors with wrap around decking outside
- * Off street parking for 2 vehicles tandem style.
- * Available from 27th February 2024

Price: \$650 p/week

Bond: \$2,600

Available Date: 27/02/2024



Sophie Loadman

0499 229 748

Apply now by entering this link into your browser: t-app.com.au/stoneettalong

Register now for the next upcoming inspection by entering this link into your browser:
<https://t-app.com.au/575106>