



906/1-3 Pretoria Parade Hornsby, NSW



Exceptional penthouse living

A genuinely spectacular apartment located on the top floor of the highly sought-after Vision apartment building, this property benefits from a total floor area of approximately 147m². Enjoy Penthouse living along with breathtaking district views from your private terraces.

Price: Deposit Taken

Available Date: 10/03/2023



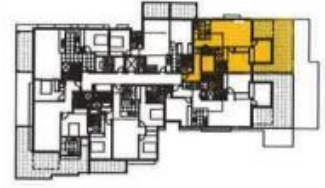
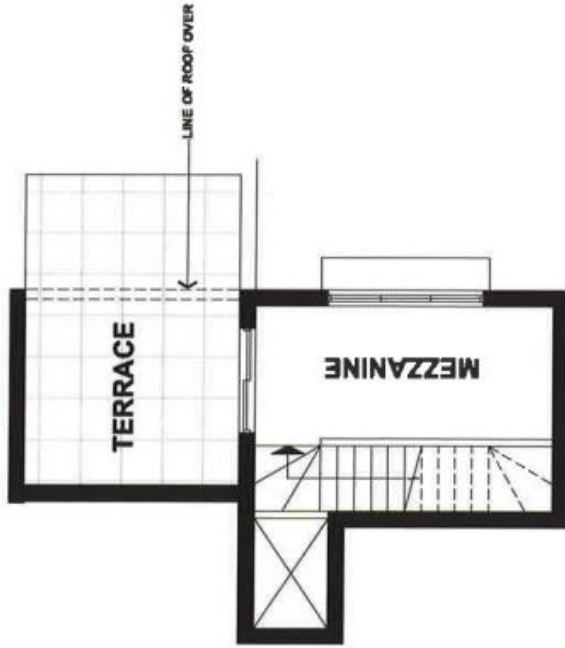
Stephanie Ryan

0451 307 760



Chase Kuo

0466 363 140



UNIT 06 - LEVEL 9

INTERNAL AREA 103.0 SQM + TERRACE 44.0 SQM
 BED 2 BED + MEZZANINE
 CAR SPACE 2
 BASEMENT STORAGE 8 CUBIC METRES

