



3/6 Shout Ridge Lindfield, NSW



Designer apartment in serene native garden setting

Designed by Architectus, this generously-sized ground-floor apartment offers contemporary luxury in a serene native garden setting. With open-plan living areas flowing seamlessly to a substantial courtyard with direct external access, this apartment is ideal for modern living. Walk to buses, Charles Bean Oval and Lindfield Learning Village (K-12), minutes to shops, Chatswood CBD and private schools.

- Luxury ground-floor apartment in exclusive 'Shout Ridge' development
- Master bedroom with large BIR, ceiling fan and leafy courtyard view
- Spacious bathroom with double-sized shower, heat lights and storage
- Open-plan kitchen, Caesarstone waterfall benches, breakfast bar
- ILVE oven and gas cooktop, SMEG sink, pantry, ample linen press
- Living areas flow to sizeable courtyard, gated for direct external access
- European laundry, study nook, feature lighting, ducted air conditioning
- Secure car space with lift access, storage cage, security video intercom

Price: Price Guide \$650,000
Council Rates: \$356.00 p/q
Water Rates: \$171.41 p/q
Strata Rates: \$1,894.28 p/q

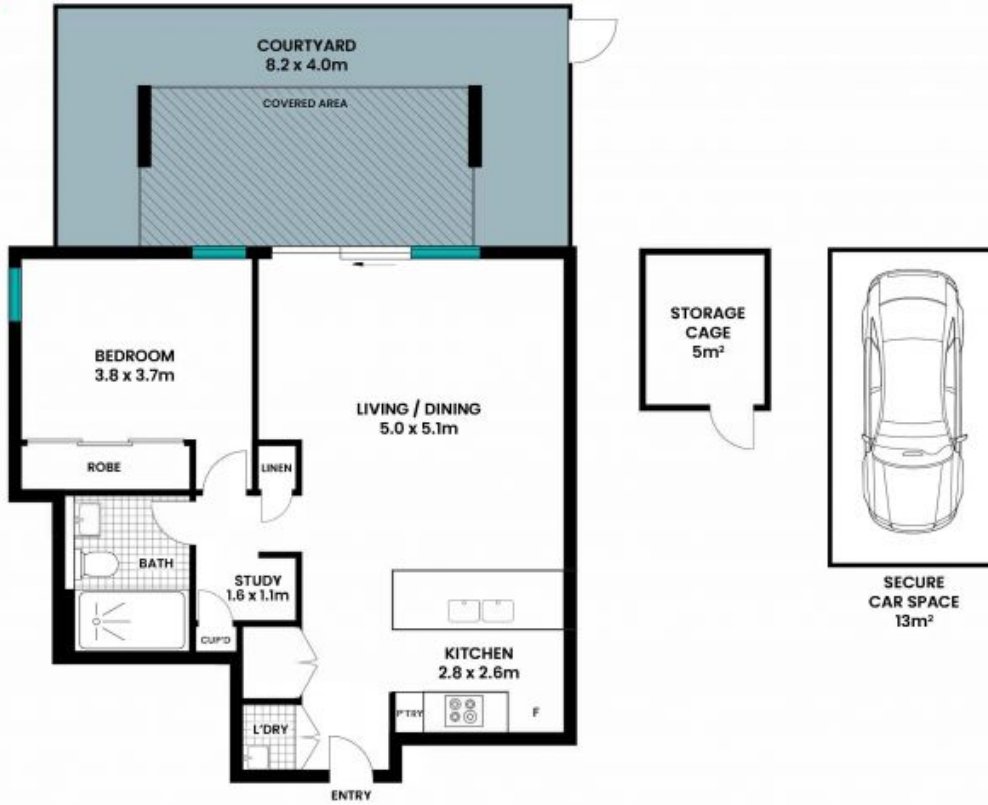


Max Ma
 0468 398 868



Claudia Conroy
 0429 338 412

3/6 Shout Ridge
Lindfield



Approx Total area : 111m²

The site plan and floor plan are not to scale; measurements are indicative and in metres. Bushes and trees are placed for illustration purposes. Plans should not be relied on. Interested parties should make and rely on their own enquiries. All other information provided has been collected from reliable sources but cannot be guaranteed for accuracy.