

92 Serafina Drive Helensvale, QLD



### Irresistible Oasis...

Discover the epitome of charm and convenience in this meticulously renovated haven, nestled in a prime locale mere steps away from Helensvale Home world. Exuding an air of sophistication, this residence offers a seamless blend of modern luxury and timeless appeal. Approximately 46 minutes to Brisbane CBD, 25 minutes to Surfers Paradise, and 45 minutes to the Gold Coast Airport.

#### Key Features:

- **Elegant Living:** Step into an expansive living space adorned with cathedral ceilings, providing a grand ambiance for everyday living and entertaining alike.
- **Stylish Renovations:** Revel in the recent enhancements throughout, including a re-fitted kitchen boasting sleek gas cooking facilities.
- **Two re fitted contemporary bathrooms.**
- **Sunlit Bedrooms:** Three generously sized bedrooms offer comfort and tranquility, with the master suite featuring a walk-in robe adorned with fitted drawers and hanging space.
- **Premier Location:** Positioned perfectly for effortless access to local shops, cafes, restaurants, and fitness amenities at Helensvale Home world. Plus, with the M1 nearby, Brisban...

**Price:** \$866,000



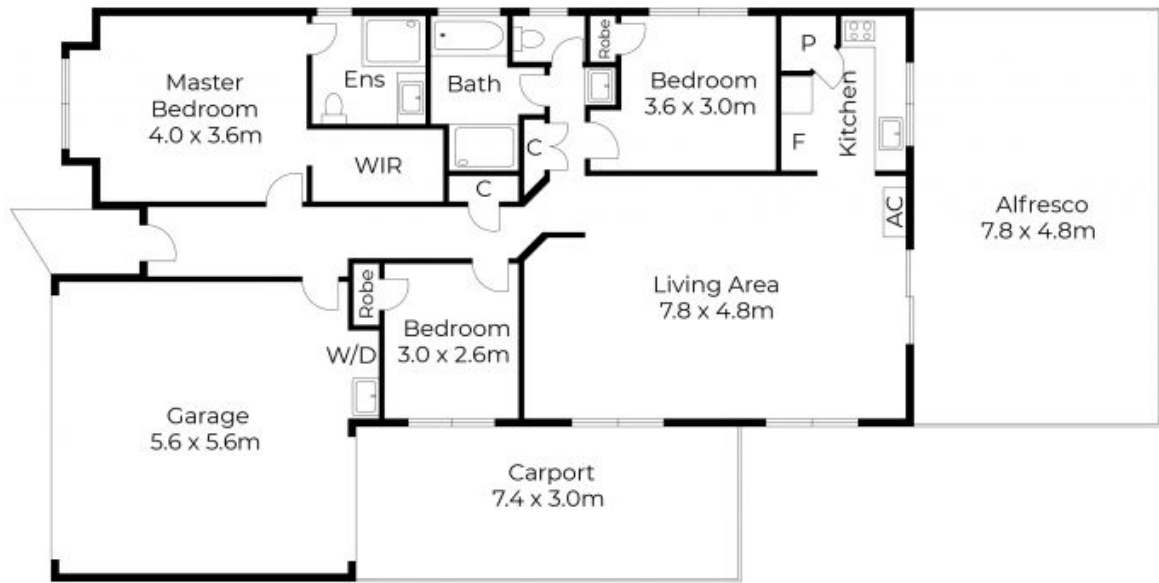
**Andrew Colley**

0488 217 803



**Andrew Colley**

0488 217 803



Floor plans and site plans are for illustrative purposes only. They are not part of any legal document or title and are subject to errors, omission, and inaccuracies. Whilst every attempt has been made to ensure the accuracy of this plan, measurements of doors, windows, rooms, cupboards etc are approximate only.

APPROXIMATE AREA  
 LIVING AREA : 107 m<sup>2</sup>  
 TOTAL AREA : 200 m<sup>2</sup>



Floor plans and site plans are for illustrative purposes only. They are not part of any legal document or title and are subject to errors, omission, and inaccuracies. Whilst every attempt has been made to ensure the accuracy of this plan, measurements of doors, windows, rooms, cupboards etc are approximate only.

APPROXIMATE AREA  
LIVING AREA : 107 m<sup>2</sup>  
TOTAL AREA : 200 m<sup>2</sup>