



710/34 Wentworth Street Glebe, NSW



Fantastic apartment with marvelous city views

This wonderful apartment possesses immense attraction for the right tenant. Balanced by generous outdoor space, interiors receive a healthy intake of natural light and offer a dynamic panorama across the city skyline.

Price: Deposit Taken @ \$550 pw

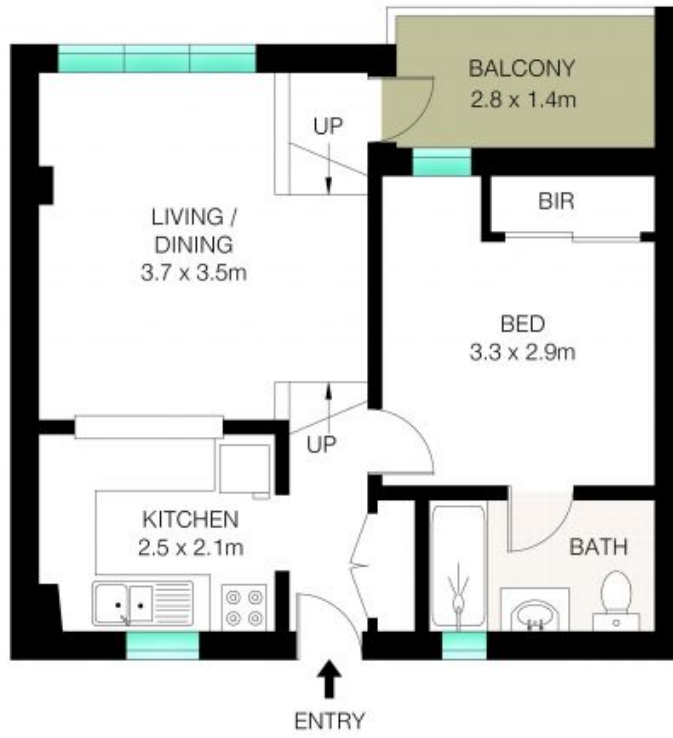
Bond: \$2,200

Available Date: 28/03/2024



Stavroula Skagias

0408 867 836



LEVEL 7



INT: 36m²
EXT: 4m²



This Floor Plan was prepared by WWW.CRYINGOUTLOUD.COM.AU for illustration purposes only. This document does not constitute any part of an offer or contract. Dimensions are approximate only. Copyright ©2023 Crying Out Loud. All Rights Reserved.

710/34 Wentworth St, Glebe