



710/34 Wentworth Street Glebe, NSW



### Fantastic apartment with marvelous city views

This wonderful apartment possesses immense attraction for the right tenant. Balanced by generous outdoor space, interiors receive a healthy intake of natural light and offer a dynamic panorama across the city skyline.

It features:

- Combined living/dining with tall windows providing a panoramic view
- Sheltered balcony offers a view over the treetops extending to the city
- Functional kitchen designed with ample storage, electric appliances
- Bedroom is equipped with mirrored built-in robe and remote ceiling fan
- Currently configured to offer a study nook in living room
- Building offers common laundry,

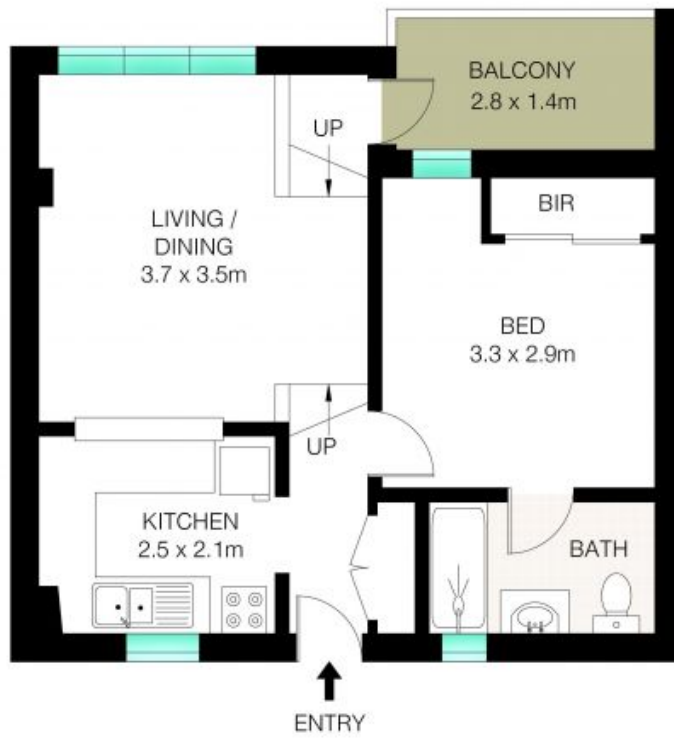
Located for quick access to universities and the CBD, this address is within walking distance of Glebe Village and Broadway Shopping Centre, as well as buses and light rail.

**Price:** Deposit Taken @ \$550 pw  
**Bond:** \$2,200  
**Available Date:** 28/03/2024



**Stavroula Skagias**

0408 867 836



LEVEL 7



INT: 36m<sup>2</sup>  
EXT: 4m<sup>2</sup>



This Floor Plan was prepared by WWW.CRYINGOUTLOUD.COM.AU for illustration purposes only. This document does not constitute any part of an offer or contract. Dimensions are approximate only. Copyright ©2023 Crying Out Loud. All Rights Reserved.

710/34 Wentworth St, Glebe