



34 Stowport Avenue Crace, ACT

4

3

2

Timeless Charm with Modern Touches

Crafted with meticulous attention to detail and contemporary finesse, this remarkable home exudes architectural elegance and a well-designed layout. Boasting modern fittings and fixtures, along with inviting, sunlit living and entertaining spaces, this residence is set in a peaceful area, offering tranquil views of green open spaces. Its enviable location places it within walking distance to the abundance of lifestyle amenities at Crace Shopping Centre.

Price: SOLD - \$1,050,000



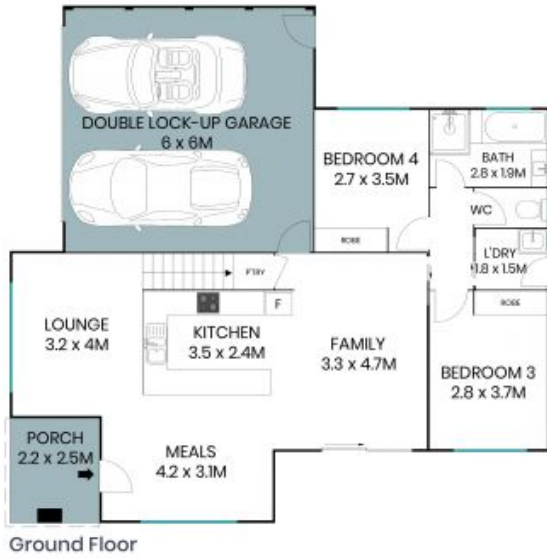
Jess Smith

0410 125 475



Alex Ogbonna

0423 535 024



The site plan and floor plan are not to scale; measurements are indicative and in metres. Bushes and trees are placed for illustration purposes. Plans should not be relied on. Interested parties should make and rely on their own enquiries. All other information provided has been collected from reliable sources but cannot be guaranteed for accuracy.