

69 Dubai Circuit Spring Mountain, QLD

4 2 2

OUTSTANDING INVESTMENT WITH THE PERFECT TENANTS

This immaculately presented property is ideal for those who desire a beautiful, well-maintained home in the sought-after Park Lane within Spring Mountain Estate.

This beautifully presented home boasts the perfect tenants who cherish and maintain the property as their own. Situated in a peaceful court location, opposite a lovely park and neighbouring school, this property offers convenience and tranquillity. You'll love the easy stroll to nearby Orion Springfield shops, childcare and medical facilities, offices, sporting grounds and even a gym. Convenience is at your doorstep.

The house has been wonderfully maintained to ensure its longevity and invites you to kick off your shoes and enjoy its comfortable interior.

Children will love their dedicated activity area, while the study nook offers quiet space for work or study....

The well-located bedrooms allow separation for adults and growing children. As with all good designs, the main bedroom is completed with ensuite and walk-in robe....

...

DISCLAIMER:...

Please note: Due to extreme buyer demand, some properties may have been sold in the preceding 24 hours of an advertised open home. Therefore confirmation of all open home times wit...

Price: Offers Over \$780,000

Council Rates: \$705.25 p/q

Water Rates: \$259.66 p/q



Bridgette Griffiths

0430 445 750



Claire Franklin

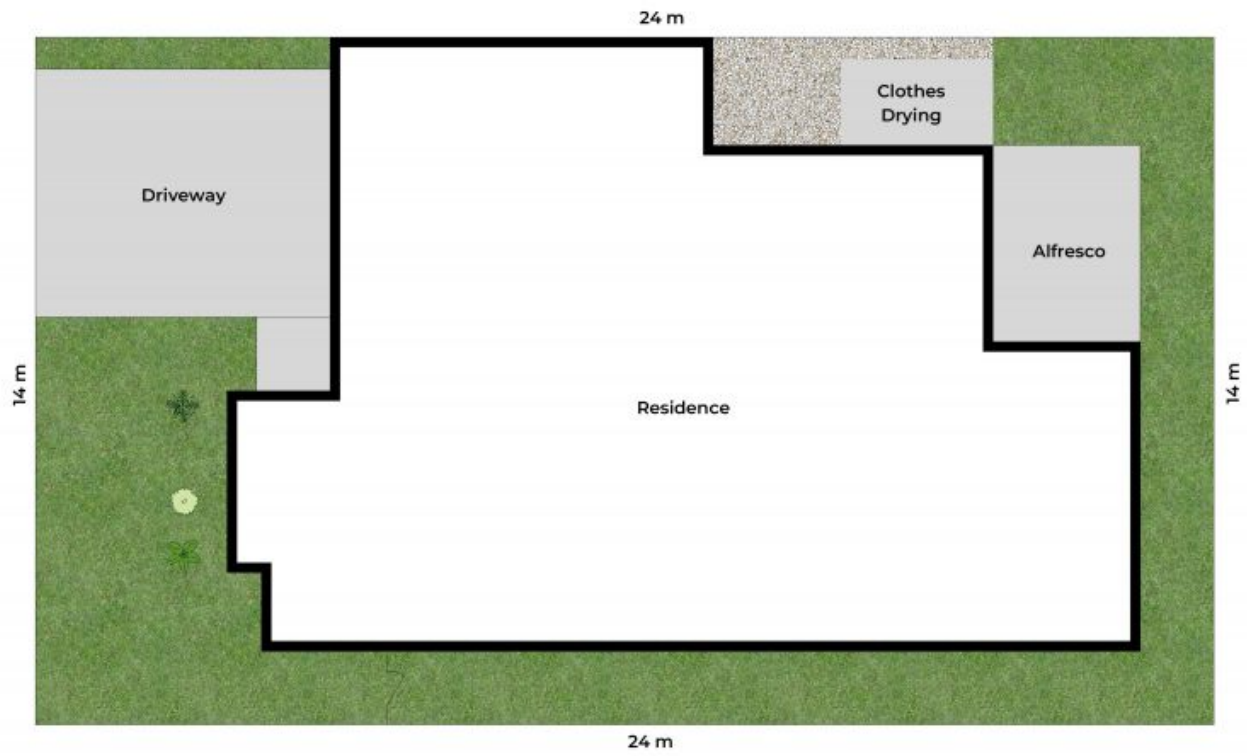
0430 438 889



Approx. Floor Area | Internal 172 m² | External 14 m² | Total 186 m²

Unless otherwise stated, all dimensions are in metres. Star arrows indicate the upward direction. This plan and information contained within is for illustrative purposes only and not guaranteed to be exact. Interested parties should make their own enquiries.





Lot Area | 336 m²



Unless otherwise stated, all dimensions are in metres. Star arrows indicate the upward direction. This plan and information contained within is for illustrative purposes only and not guaranteed to be exact. Interested parties should make their own enquiries.