



5 Eldon Lane Beecroft, NSW



## Single level family entertainer on 739.8sqm in the Beecroft Public catchment

Entering the market for the first time in 53 years, this single-level oasis boasts a functional north-facing floorplan revealing bright and airy interiors that effortlessly unfold to an outdoor entertaining area overlooking the stunning saltwater pool. Nestled on a generous 739.8sqm level parcel, it's in the catchment of Beecroft Public, Cheltenham Girls, and Carlingford High School.

- Picturesque street presence with beautifully manicured gardens and level lawn
- Versatile layout, featuring dedicated lounge and bathroom to two rear bedrooms
- Promising entertaining ease and the ideal backdrop for countless pool parties
- Renovated kitchen with induction cooktop, stone benchtops and glass splashback
- Generous carpeted bedrooms with built-in wardrobes, ceiling fans to three beds
- Modern accessible family bathroom with large shower, bathtub, and skylight
- Beautifully presented, with ornate plasterwork and freshly painted exterior
- Double auto lock-up garage featuring internal access, storage, and a workbench

**Price:** Sold at auction

**Council Rates:** \$567.70 p/q

**Water Rates:** \$173.29 p/q



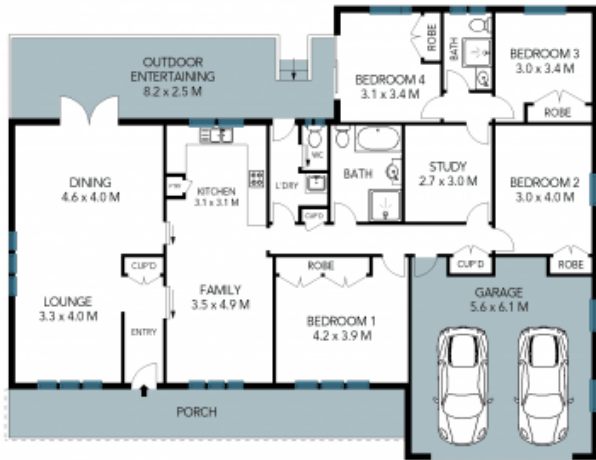
**James Ramsay**

0420 665 913



**Chloe Mawass**

0431 983 240



SITE PLAN

The site plan and floor plan are not to scale; measurements are indicative and in metres. Bushes and trees are placed for illustration purposes. Plans should not be relied on. Interested parties should make and rely on their own enquiries. All other information provided has been collected from reliable sources but cannot be guaranteed for accuracy.