



62 John Lane Road Yarravel, NSW

3 2 3

### Family Home with Established Gardens and Shedding on 1Ha (2.4Ac) in Yarravel

Set back off the road, surrounded by heavenly trees and an established garden oasis is this beautiful home on 1Ha (2.4Ac) with plenty of storage as well.

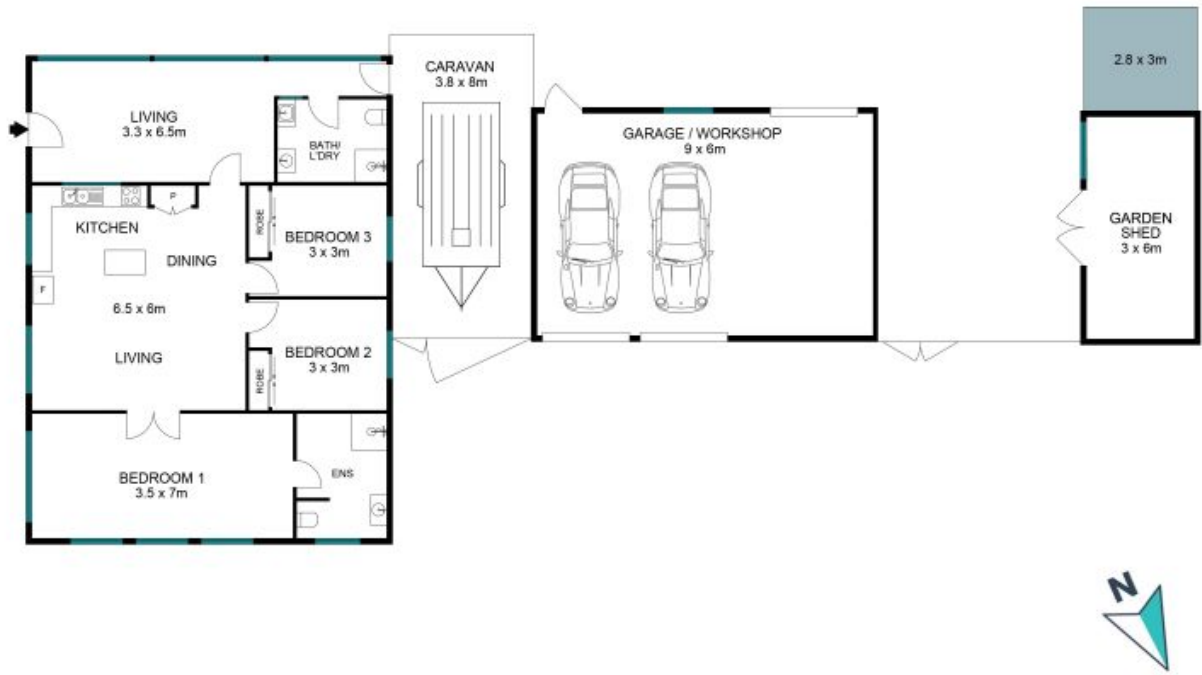
**Price:** \$689,000  
**Council Rates:** \$2,069.48/year (approx)



**Carlos Peters**

0427 256 570

62 John Lane Road  
Yarravel



The site plan and floor plan are not to scale; measurement are indicative in meters. Bushes and trees are placed for illustration purposes. Plans should not be relied on. Interested parties should make and rely on their own inquiries. All other information provided has been collected from reliable sources but cannot be guaranteed for accuracy.