



62 John Lane Road Yarravel, NSW 3 2 3

Family Home with Established Gardens and Shedding on 1Ha (2.4Ac) in Yarravel

Price: \$689,000
Council Rates: \$2,069.48/year (approx)

Set back off the road, surrounded by heavenly trees and an established garden oasis is this beautiful home on 1Ha (2.4Ac) with plenty of storage as well.

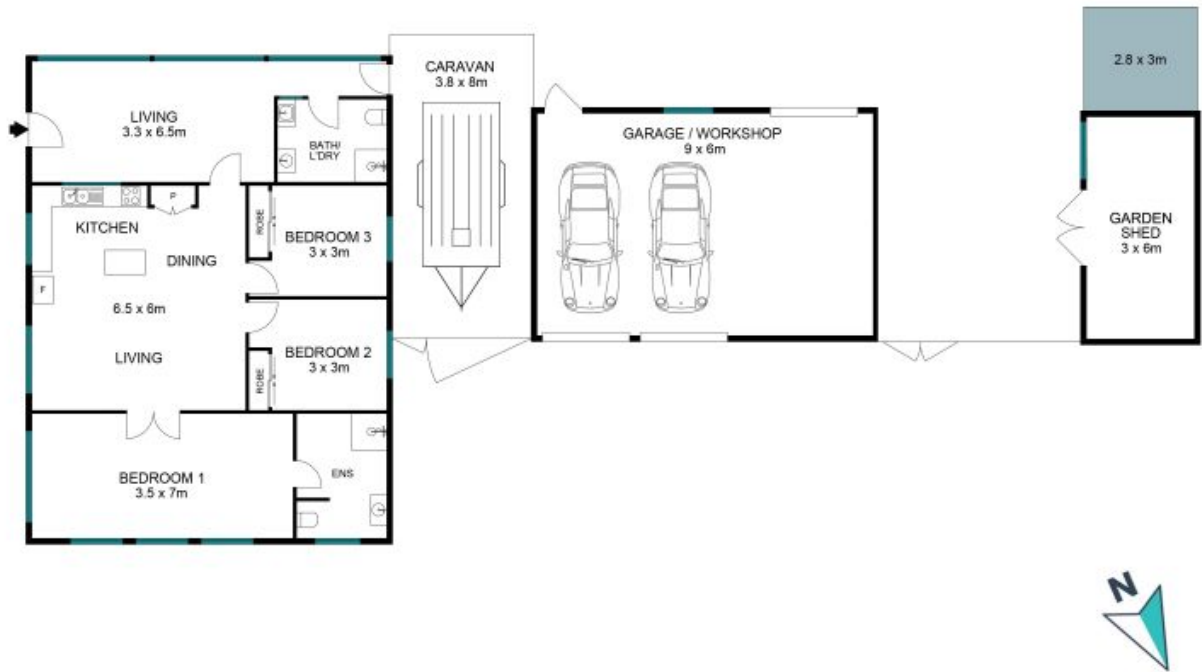
Inside you'll find an extra-large main bedroom with ensuite and plenty of space for a lounge and reading nook and two smaller rooms with built-in robes. An open plan living/dining/kitchen is in the center of the home, while a second living room (currently set up as a 4th bed and office) rounds out the home.

- Feature of the home include:
- 3 Bedroom, 2 Bathroom, 3 Car
 - Ensuite to main bedroom
 - Built-in robes to secondary bedrooms
 - Gas cooking/wall oven
 - Ceiling fans, air-conditioning
 - 2nd living area
 - Plantation shutters



Carlos Peters
0427 256 570

62 John Lane Road
Yarravel



The site plan and floor plan are not to scale; measurement are indicative in meters. Bushes and trees are placed for illustration purposes. Plans should not be relied on. Interested parties should make and rely on their own inquiries. All other information provided has been collected from reliable sources but cannot be guaranteed for accuracy.