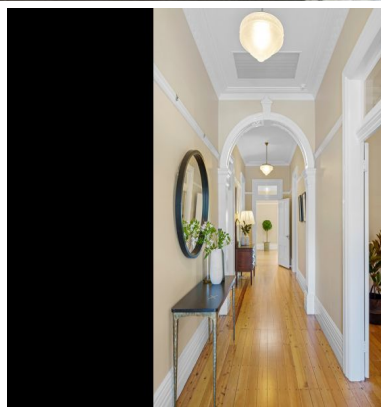


STONE



STONE



STONE



STONE

114 Beecroft Road Beecroft, NSW

4

1

3

3

Double Brick Federation home within Beecroft Primary Catchment

The richness of Ravenhurst's history is matched by the appeal of its current-day dimensions, sensitively maintained spaces and magnificent Federation charm. One of three adjacent bungalows, set back on 866.3sqm behind a fully gated and utterly private established front yard, it highlights a tessellated return verandah, decorative plasterwork, high ceilings and marble fireplaces appealing in any era, with the enhancement of fresh paintwork, interior mouldings and a beautiful Japanese garden. A 270m stroll to Beecroft Public and 650m to the station and village only furthers the immense appeal of this significant family home.

- Flagstone pathed frontage featuring a tree-house and lush child-friendly lawns
- Automated security gates with intercom, completely private front/rear yards
- Grand formal lounge with original gas lights, fireplace and verandah access
- Separate dining room, sunroom and study all with French doors leading outside
- Gleaming Caesarstone kitchen featuring an eat-in bar and Euromaid gas stove
- Four traditionally scaled bedrooms, walk-in wardrobe and ensuite to the master

Price: UNDER CONTRACT
Council Rates: \$601.90 p/q
Water Rates: \$171.41 p/q



Kevin Dearlove

0403 338 302



Brian Kong

0435 333 383

114 Beecroft Road, Beecroft

 4
  3
  3
  190m²
 866.3m²

STONE



THIS IS AN ARTIST'S IMPRESSION - ALL DIMENSIONS, LAYOUTS AND TREES ARE APPROXIMATE
ALL INTERESTED PARTIES SHOULD MAKE AND RELY ON THEIR OWN ENQUIRIES

