



108 Woodbury Park Drive Mardi, NSW

3 2 2

Location Location!

The opportunity of the year! This two-storey home has all the potential you want in a home with spacious living across both levels. Consisting of three great sized bedrooms upstairs, the master boasts a large ensuite and walk through wardrobe.

Downstairs you'll find a large living room with a separate dining space just off the kitchen which opens up onto an impressive outdoor space. This property is centrally located in Mardi and is within walking distance to some great amenities such as Tuggerah Train Station for a direct link to Sydney, Tuggerah Westfield shopping centre that offers all of your major retail outlets and restaurants. Don't wait, as this could be the one you've been searching for!

Main features -

- Three spacious bedrooms with large walk-in robe and ensuite to the master bedroom
- Functional floor-plan that offers separate living and dining space

Price: Contact Agent
Council Rates: \$389.00 p/q
Water Rates: \$250.00 p/q



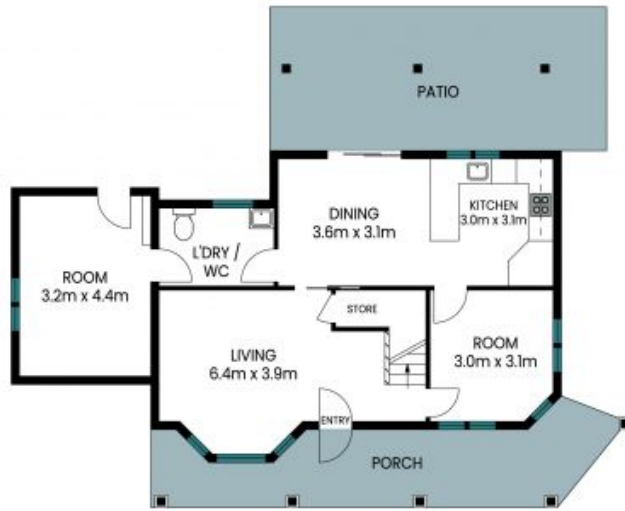
Volkan Akintetik

0499 830 247

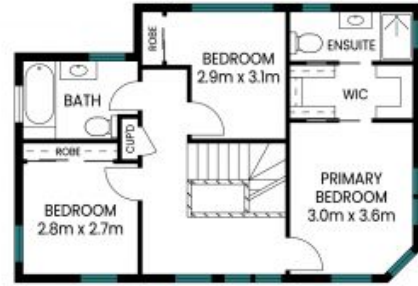


Reece Caira

0431 013 342



Floor One



Floor Two

Internal Area: 128 sqm
External Area: 47 sqm
Total Area: 175 sqm

PLEASE NOTE: These Floor and Site Plans have been generated for marketing purposes and are to be used as a guide only. While all care is taken, no guarantee can be given in respect of accuracy, sizes and dimensions are approximate, actual may vary