



3/7 Walco Drive Toormina, NSW

3  2  2 

Stylish Townhouse - What a Location!

Rates: \$674.50pq approx...

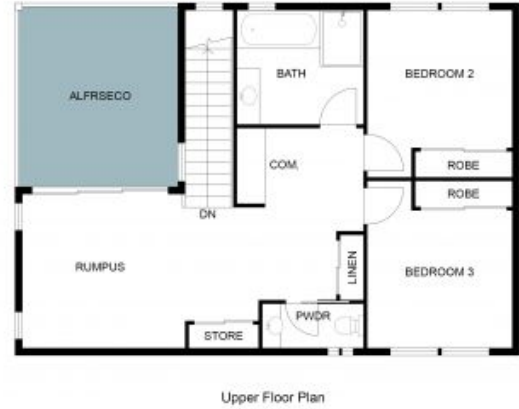
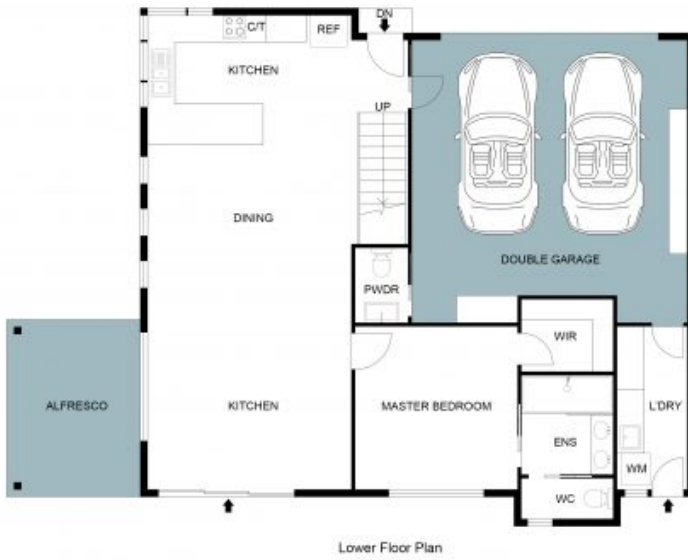
Price: \$980,000-1,050,000

Council Rates: \$674.50 p/q



Yvette Ward

0403 602 544



The Floor plan is not to scale; measurements are indicative and in metres. Plans should not be relied on. Interested parties should make and rely on their own enquiries. All other information provided has been collected from reliable sources but cannot be guaranteed for accuracy.