



5 Matthew Circuit Mardi, NSW

5

2

2

Elegance With Grand Proportions

Nestled in the heart of Mardi, where the gentle hum of a family-friendly neighbourhood serenades the senses, this opulent home is waiting on a family to embrace a lifetime of new cherished memories. With striking street appeal, grand proportions, lavish spaces, and an allure that beckons, this home truly is one of a kind.

As you step through the front door, time seems to stand still, and the grandeur of this abode unfolds. The array of formal and casual living spaces leads you through with effortless flow. The expansive kitchen is a chef's delight and is perfectly positioned overlooking the inground pool and landscaped yard.

An abundance of bedrooms, five in total are sanctuaries of peace and offer a view of the greenery and surrounds. With whispers of elegance, Spa-like bathrooms beckon promising moments of self-indulgence and relaxation, elevating everyday routines into rituals of luxury.

...
Mardi is a tightly held community with top -tier amenities very close by; private schooling, parks, restaurants and cafes, Westfield Tuggerah, public transport, medical facilities and Wyong hospital, and a seamless 90 minutes' drive to Sydney. So much convenience for yo...

Price: \$1,200,000



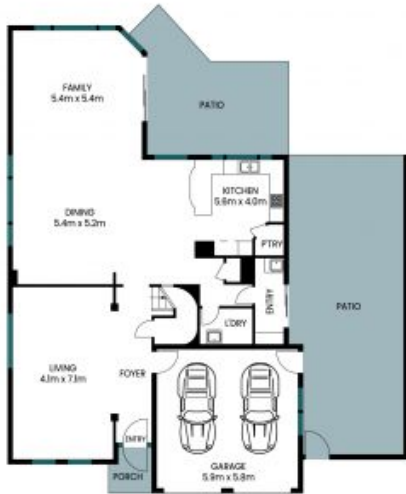
Shanti Santhou

0451961436

Alyce Lewis

0423 950 626

5 Matthew Circuit Mardi



Ground Floor



First Floor



Site Plan

Internal Area: 274 sqm
 External Area: 88 sqm
 Garage Area: 34 sqm
 Total Area: 396 sqm

PLEASE NOTE: These Floor and Site Plans have been generated for marketing purposes and are to be used as a guide only. While all care is taken, no guarantee can be given in respect of accuracy, sizes and dimensions are approximate, actual may vary.