



1/34 Shirley Road Wollstonecraft, NSW



SOLD PRIOR TO AUCTION BY DAVID HILL 0411 491 122

A modern Art Deco apartment with private oversized garden courtyard

Features:

- Idyllic easy care garden
- High ceilings, period cornices, retro light fittings
- Timber flooring, plantation shutters, air conditioning, fans in bedrooms, gas outlet
- Generous L shaped living and dining room
- Private enclosed 'exclusive use' courtyard garden and landscaped garden
- Stone benchtops, gas kitchen, European appliances, stainless steel drawer dishwasher
- European laundry
- King size main bedroom with built-ins

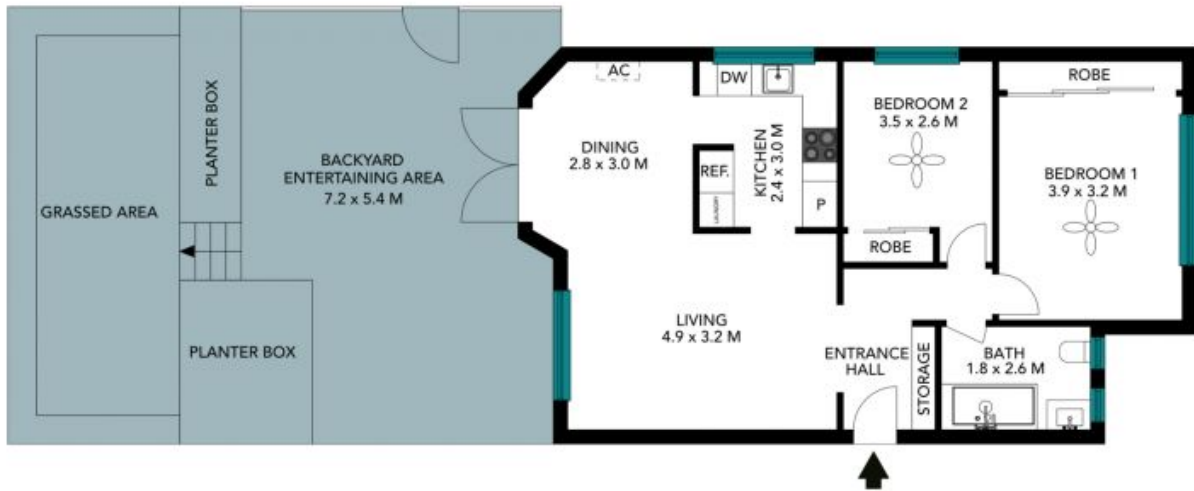
Council Rates: \$313.00 p/q
Water Rates: \$171.00 p/q
Strata Rates: \$1,662.00 p/q



David Hill
 0411 491 122



Ruby Johnson
 0432 869 227



The floor plan is not to scale, measurements are indicative and in metres. Exterior elements are not in position. Plans should not be relied on, interested parties should make and rely on their own enquiries. All other information provided has been collected from reliable sources but cannot be guaranteed for accuracy.

1/34 Shirley Road
Wollstonecraft



The floor plan is not to scale; measurements are indicative and in metres. All features included in this 3D plan are for inspiration purposes only. This is not an exact replica of the property or the position of exterior elements. Plans should not be relied on. Interested parties should make and rely on their own enquiries.