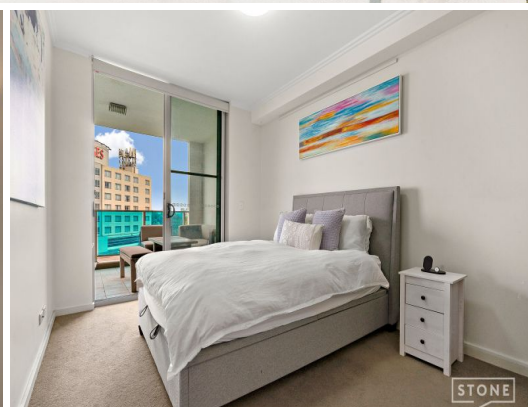


The logo for STONE real estate, featuring the word "STONE" in a bold, sans-serif font inside a white rectangular box with a stylized speech bubble tail pointing downwards and to the right.

605/3 Weston Street Rosehill, NSW

3  2  1 

Modern Three-bedroom Apartment

This conveniently located three-bedroom apartment is positioned on level 6 of a secure complex and boasts skyline views & modern finishes throughout. You will find yourself a short distance from shops, public transport, Rosehill Public school, Rosehill Gardens Racecourse, James Ruse Drive & Parramatta CBD.

- Sleek kitchen with stone benchtops & under-bench oven
- Open plan lounge & dining area with a split system air-conditioner
- Three bedrooms, all with balcony access
- The sizeable master suite boasts a walk-in wardrobe & an ensuite
- Internal laundry + linen cupboard
- Generously sized, covered balcony with skyline views
- Two modern, fully tiled bathrooms
- Secure carspace + lift access

Price: \$615,000



Simar Gill

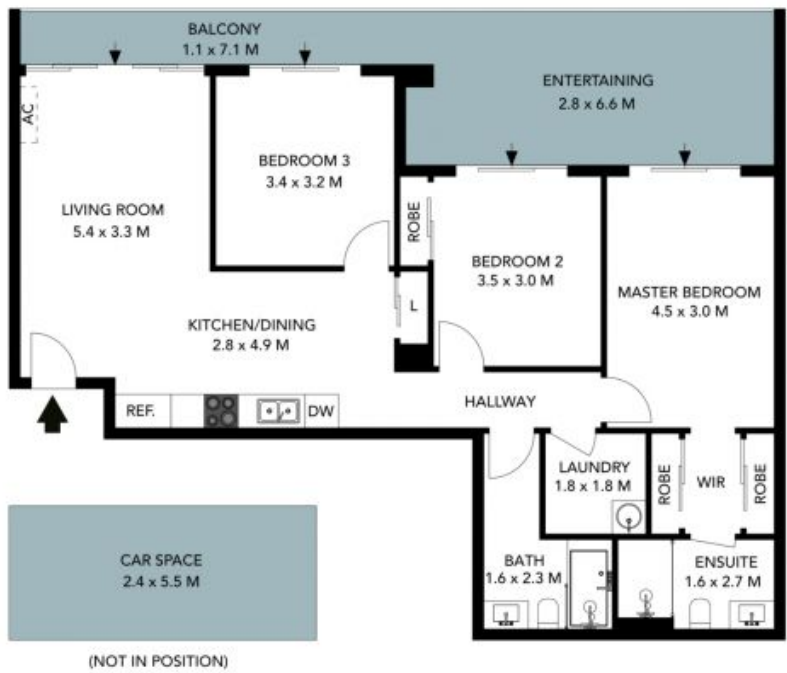
0410 312 242



Chris Kypreos

0432 354 445

605/3 Weston Street
Rosehill



The floor plan is not to scale, measurements are indicative and in metres. Exterior elements are not in position. Plans should not be relied on, interested parties should make and rely on their own enquiries. All other information provided has been collected from reliable sources but cannot be guaranteed for accuracy.

605/3 Weston Street
Rosehill



The floor plan is not to scale; measurements are indicative and in metres. All features included in this 3D plan are for inspiration purposes only. This is not an exact replica of the property or the position of exterior elements. Plans should not be relied on. Interested parties should make and rely on their own enquiries.