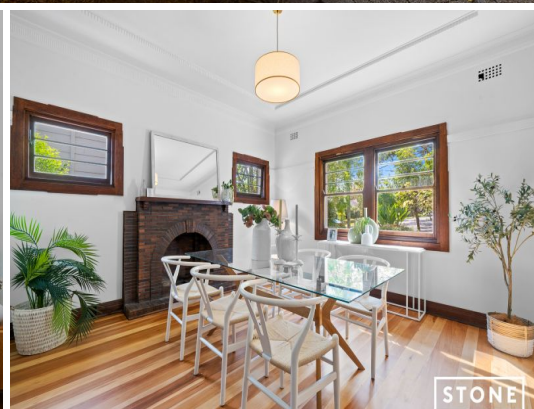




STONE



STONE



STONE

27 Fiona Road Beecroft, NSW

6 2 2

Family home + 2 bedroom granny flat on 1,214sqm in Beecroft Primary and Cheltenham Girls zones

This gracious family home holds spectacular dimensions inside and out upon 1,214sqm land - with the attractive benefit of a two-bedroom residence quietly tucked at the rear. Beautifully rejuvenated through fresh renovations and garden restoration, the combination of its handsome period allure, large family format, established garden setting and well-appointed guest, in-law or rental flat are only furthered by its compelling first-class address, with shortcut access to Beecroft Primary through Kenwick Lane.

Price: SOLD AT AUCTION
Council Rates: \$730.00 p/q



Kevin Dearlove

0403 338 302



Brian Kong

0435 333 383

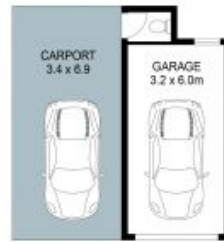
27 Fiona Road, Beecroft



6
 2
 2
 201m²
 1214m²

HOUSE: 148m²

GRANNY FLAT
 INTERNAL: 53m²
 EXTERNAL: 21m²



THIS IS AN ARTIST'S IMPRESSION - ALL DIMENSIONS, LAYOUTS AND TREES ARE APPROXIMATE
 ALL INTERESTED PARTIES SHOULD MAKE AND RELY ON THEIR OWN ENQUIRIES

