

STONE



STONE



STONE



STONE



STONE

6/7 Blackwood Road Logan Central, QLD      2       1       1 

### UNBEATABLE VALUE FOR MONEY

The paint has just dried, and the new flooring is in place, so it's time to capitalise on this fantastic opportunity. Located in the heart of Logan Central, less than a 500 metre walk to Woodridge Train Station, and surrounded by shops and businesses, the location of this townhouse is amazingly convenient.

Welcome to Unit 6/7 Blackwood Road, set in a small complex of 8 units, with low Body Corporate fees, this townhouse is the perfect investment. Greeting you is the fresh and appealing open plan living area and functional kitchen, with a spacious separate laundry and additional toilet completing the lower level.

Moving upstairs, the new carpet lifts the overall appeal of this unit and leads you to the two bedrooms both featuring built-in robes. The main bedroom is very spacious, with a large window for an abundance of natural light, and the second bedroom overlooks the courtyard to the rear. The family bathroom comprises of a large vanity, shower and toilet.

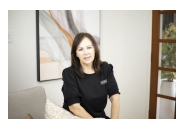
A paved private courtyard is to the rear of the unit surrounded by 6ft fencing and complet...

Price:      Offers Over \$260,000



**Bridgette Griffiths**

0430 445 750



**Leanne Gunn**

0413 817 092



Approx. Floor Area | Internal 72 m<sup>2</sup> | External 55 m<sup>2</sup> | Total 127 m<sup>2</sup>

Unless otherwise stated, all dimensions are in metres. Star arrows indicate the upward direction. This plan and information contained within is for illustrative purposes only and not guaranteed to be exact. Interested parties should make their own enquiries.

