



11 Silverwisp Road Chisholm, NSW



### Ready to move into now!

Combining elegant spatial flow and intelligent separation of private spaces the Vista design has all the features to meet modern family requirements with space for every member of the family.

At the heart of the home is the perfect space for the family to come together and entertain guests boasting an impressive open plan living area with kitchen Dining and Family that opens outdoors onto a large covered Alfresco.

Towards the rear of the home is the kids' zone with bedrooms and family bathroom surrounding a central activity room. A master bedroom suite is privately positioned behind a separate lounge room to the front and is complemented by a well-appointed ensuite and walk in robe.

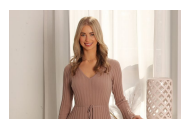
The Vista offers an individually crafted inspiring Hampton facade.

Set in a stunning pocket surrounded by quality display homes & only minutes away from Greenhills shopping centre, new Maitland Hospital, quality schools and only 30 Minutes drive to our world famous Hunter Valley wine region & beaches.

A quality meticulously Master built home ready to move into with all the hard work completed!

Price:

Contact Agent



**Courtney Matheson**

0400 768 103



**David Tanchevski**

02 4089 1111

20 320



13 760