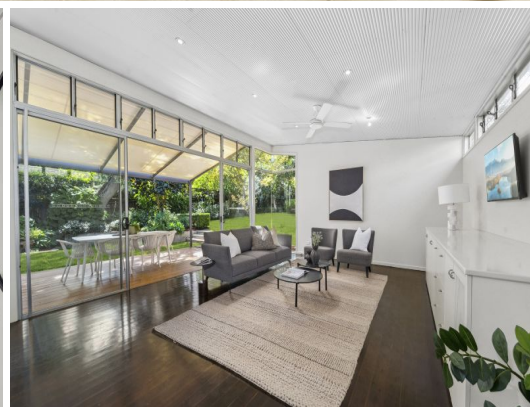


STONE



53 Kooloona Crescent West Pymble, NSW

5 

3 

2 

## Family comfort and convenience in sublime garden retreat

This blissfully private family home sets a tone of relaxed comfort and easy entertaining with innate transition to an exquisitely designed garden on approximately 923sqm of land. Perfect for growing or multi-generational families wanting a quiet lifestyle while enjoying footsteps to easy transport, great local shopping, premier schools, and outstanding leisure facilities. The open plan living and dining has a modern pavilion feel featuring expansive glass doors that blur the line between interiors and the covered entertaining deck. Bedrooms are spacious and versatile, opening to balconies for a leafy connection with nature.

- Bus in street for Gordon rail and Macquarie, close to Chatswood + North Ryde
- Walk to West Pymble Public and Gordon West Public School and Bicentennial Park sports and leisure
- Near popular West Pymble shopping centre, and Pymble Ladies College
- Street appeal with thriving plants set amongst contemporary sculptural timbers
- Two living rooms with built-in entertaining units providing plenty of storage

Price:

Contact Agent



**Ryan Woo**

0410 884 680



**Christopher Smith**

0432 369 197



53 Kooloona Crescent,  
West Pymble

STONE



Internal area: 242m<sup>2</sup>  
Carport & external area: 106m<sup>2</sup>  
Total area (approx): 348m<sup>2</sup>

The floor plan is not to scale, measurements are indicative and in metres. Exterior elements are not in position. Plans should not be relied on interested parties should make and rely on their own enquiries. All other information provided has been collected from reliable sources but cannot be guaranteed for accuracy.