

6/10 Lincoln Crescent Woolloomooloo, NSW



Elegant Luxury in Prestigious Waterfront Location

On the desirable ground floor of the 'Wharf Terraces', a boutique harbourside complex of just 34 residences, this superb apartment offers a rare opportunity for those seeking a lifestyle of exclusivity and prestige. The home is impressive in size, quality and aspect, and perfectly reflects its privileged position in one of Sydney's most historic wharf precincts and tightly-held apartment settings.

- Footsteps to the water's edge and opposite iconic Finger Wharf and its famed restaurants
- Near the Royal Botanic Gardens, below new wing of the Art Gallery of NSW, minutes from the CBD
- Embraced by privacy and tranquillity with opulent interiors and immersive views
- Walls of floor-to-ceiling glass open to apartment-wide entertainment terrace
- Oversized master bedroom has walk-in robe, spa ensuite and terrace access
- Two further bedrooms each serviced by a bathroom plus media room or fourth bedroom
- Island kitchen with Corian marble benchtops, integrated Gaggenau appliances

Price: \$6,537,500
Council Rates: \$702.10 p/q
Water Rates: \$173.29 p/q
Strata Rates: \$7,340.90 p/q



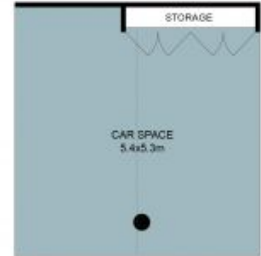
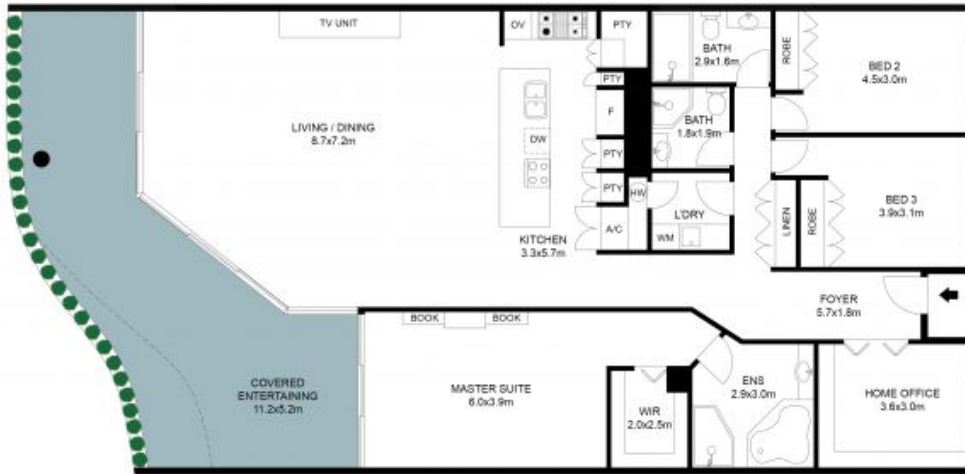
Julian Rowe

0412 544 448



Anne Essex

0426 248 455



The site plan and floor plan are not to scale; measurements are indicative and in metres. Bushes and trees are placed for illustration purposes. Plans should not be relied on. Interested parties should make and rely on their own enquiries. All other information provided has been collected from reliable sources but cannot be guaranteed for accuracy.