

12A Meya Crescent Fletcher, NSW

3 

2 

1 

Contemporary easy living at Sanctuary View

Enjoy the ease of effortless modern style in this low-maintenance family home at 'Sanctuary View.' Seamless flow from front to back encompasses two separate living areas, a striking two-tone kitchen, and inviting alfresco and yard. Master suite with walk-in wardrobe and ensuite, plus built-in wardrobes in other bedrooms. Love the ducted air conditioning, latest fixtures in bathrooms and kitchen, and ample storage.

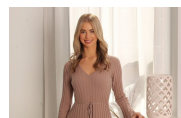
- Low maintenance, Torrens title duplex, completed 2020
- Two separate living rooms, ducted a/c and floating floors
- Caesarstone kitchen with gas cooktop and walk-in pantry
- All three bedrooms fitted with built-in/walk-in robes and carpet
- Covered alfresco entertaining area and low maintenance yard
- Main bathroom with freestanding bathtub and shower, master ensuite
- Estate features sports fields, playgrounds, childcare, medical & community centre
- Moments from Fletcher shopping village and Bishop Tyrrell Anglican College

Inspect:

Saturday, 11th May 2024 10:45 - 11:15

Price:

\$699,000 - \$749,000



Courtney Matheson

0400 768 103



The site plan and floor plan are not to scale; measurements are indicative and in metres. Bushes and trees are placed for illustration purposes. Plans should not be relied on. Interested parties should make and rely on their own enquiries. All other information provided has been collected from reliable sources but cannot be guaranteed for accuracy.

