



229/1C Lemon Tree Avenue Melrose Park, NSW



Modern, Stylish Apartment

Located in 'The Residences', this one-bedroom apartment is part of Melrose Park's smart city, with electric car charging stations, shuttle buses and smart home appliances. Beautifully presented, this stylish apartment offers the perfect lifestyle of convenience ? surrounded by specialty retail and dining options and positioned just 6kms from Parramatta's CBD and 15kms from Sydney CBD.

Price: \$590,000-\$630,000



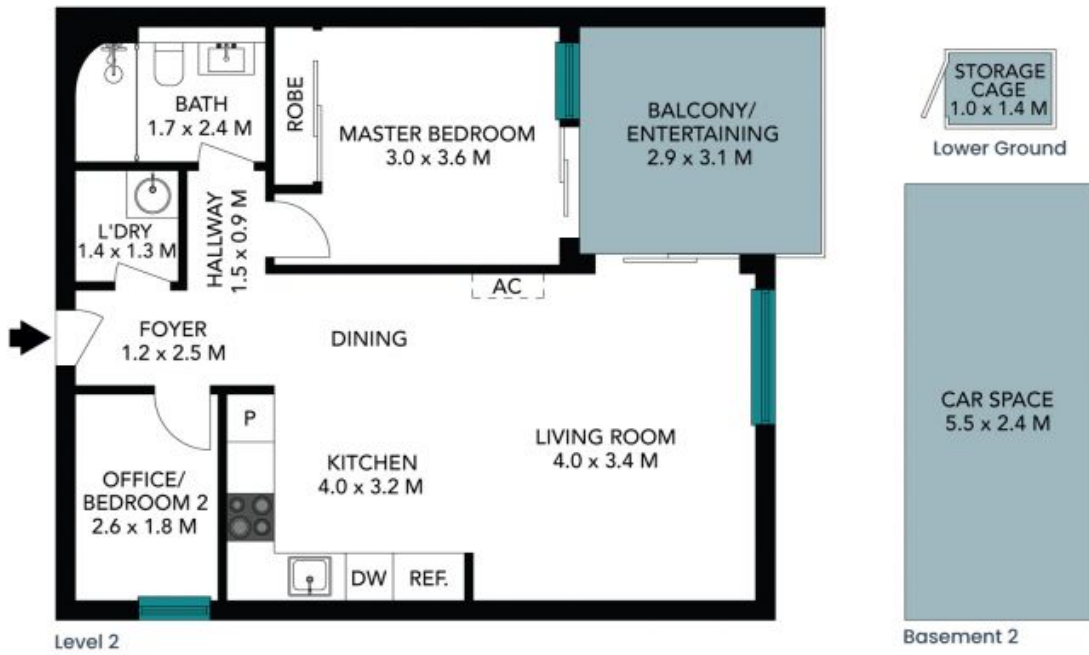
Mariah Edwards

0420 744 406



Mariah Edwards

0420 744 406



The floor plan is not to scale, measurements are indicative and in metres. Labels elements are not in position. Plans should not be relied on. Interested parties should make and rely on their own enquiries. All other information provided has been collected from reliable sources but cannot be guaranteed for accuracy.



229/1C Lemon Tree Avenue
Melrose Park



Level 2



Basement 2



The floor plan is not to scale; measurements are indicative and in metres. All features included in this 3D plan are for inspiration purposes only. This is not an exact replica of the property or the position of exterior elements. Plans should not be relied on. Interested parties should make and rely on their own enquiries.