

2/50 Crown Road Queenscliff, NSW



### Beachside ultra-spacious apartment

This three bedroom apartment is situated on the first floor and boasts the additional benefits of a balcony with a district outlook. It is located in a security access building in a highly sought after location. Nestled neatly between Queenscliff and Freshwater beaches, cafes and public transport.

- First floor apartment in security access building
- Three spacious bedrooms, all with built-in robes
- Separate W.C. to bathroom, internal laundry facilities
- Timber flooring in living areas
- Single lock-up garage
- Close proximity to public transport, beaches and cafes

Strata levies: \$1,071.19 pq approx.

Council rates: \$403.90 pq approx.

Water rates: \$171.41 pq approx.

Price: \$1,685,000



**Adam Moore**

0428 319 096



**Mark Skeens**

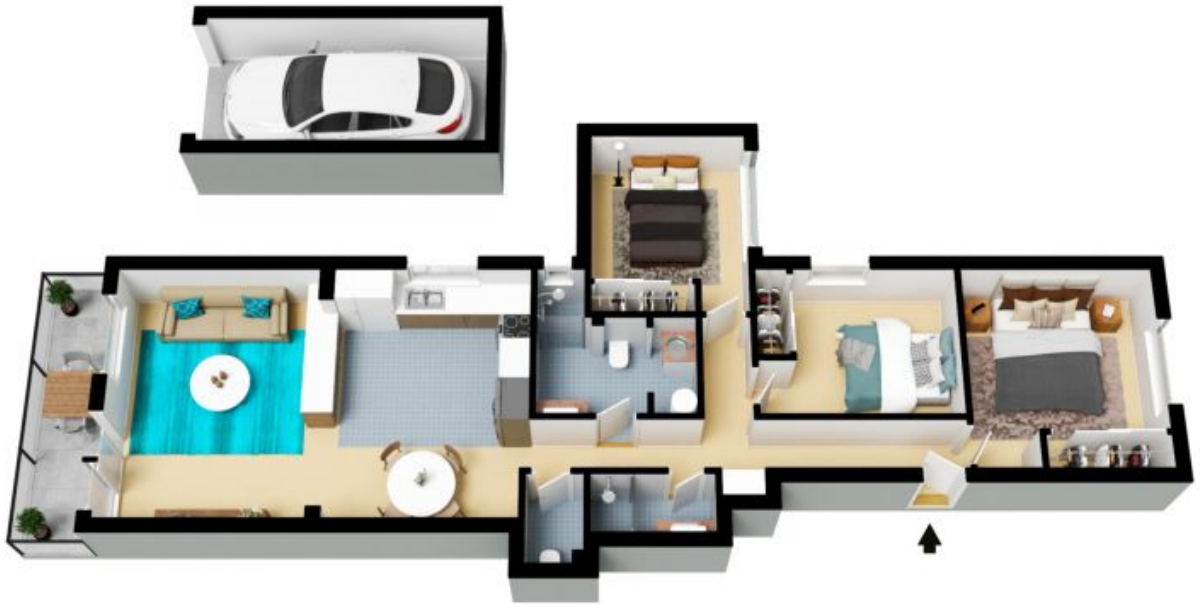
0401 241 381

2/50 Crown Road  
Queenscliff



The floor plan is not to scale, measurements are indicative and in metres. Exterior elements are not in position. Plans should not be relied on, interested parties should make and rely on their own enquiries. All other information provided has been collected from reliable sources but cannot be guaranteed for accuracy.

2/50 Crown Road  
Queenscliff



The floor plan is not to scale; measurements are indicative and in metres. All features included in this 3D plan are for inspiration purposes only. This is not an exact replica of the property or the position of exterior elements. Plans should not be relied on. Interested parties should make and rely on their own enquiries.