



336 Yarramalong Road Wyong Creek, NSW



### Lifestyle of Luxury!

An incredible opportunity presents itself with this 54.5 acre (approx.) horse property, a serene gateway to the Yarramalong Valley.

Ideally located between Sydney thoroughbred enterprises & the Hunter Valley Stud farms, this property comes well equipped. Facilities include a stunning near new single level residence, along with a fully self-contained managers homestead, multiple paddocks, large machinery shed, wash bays, stables and plentiful water supply with multiple dams.

The main homestead boasts a spacious layout with five bedrooms and two bathrooms, providing ample space for relaxation and entertaining. The second homestead is equally inviting, featuring six bedrooms, ensuring comfort and privacy for all residents and guests.

...

Whether you're seeking a serene retreat or a haven for equestrian pursuits, this property offers endless possibilities. Embrace a lifestyle of tranquillity and sophistication amidst...

Price:

Contact Agent



**Scott Wall**

0413 965 616



**Kaela Wall**

0434726944

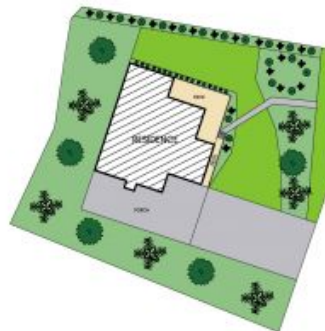


336 Yarramalong Road  
Wyong Creek

STONE



Country Farm House



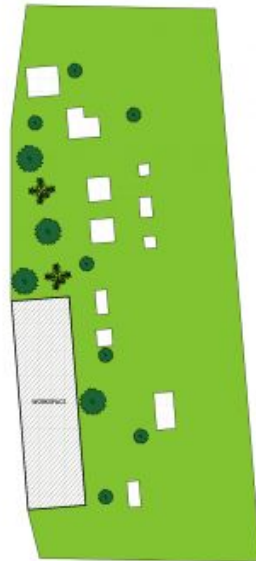
Site Plan

Internal Area: 217 sqm

PLEASE NOTE: These Floor and Site Plans have been generated for marketing purposes and are to be used as a guide only. While all care is taken, no guarantee can be given in respect of accuracy, sizes and dimensions are approximate, actual may vary.



336 Yarramalong Road  
Wyong Creek



Internal Area: 915 sqm

PLEASE NOTE: These Floor and Site Plans have been generated for marketing purposes and are to be used as a guide only. While all care is taken, no guarantee can be given in respect of accuracy, sizes and dimensions are approximate, actual may vary.

